



Datasheet for ABIN5587275
anti-RSBN1 antibody



[Go to Product page](#)

1 Image

Overview

Quantity:	100 µL
Target:	RSBN1
Reactivity:	Human
Host:	Rabbit
Clonality:	Polyclonal
Conjugate:	This RSBN1 antibody is un-conjugated
Application:	Immunohistochemistry (Paraffin-embedded Sections) (IHC (p))

Product Details

Purpose:	Rabbit polyclonal antibody raised against recombinant RSBN1.
Immunogen:	Recombinant protein corresponding to amino acids of human RSBN1.
Sequence:	KEILTQGQIN STSGLNKESF RYLKDEQLCR LNLGMQEYRV PQGVQTPFMT HQEHSIRRNF LKTGTFKFSNF IHEEHQSNGG ALV
Isotype:	IgG
Cross-Reactivity:	Human

Target Details

Target:	RSBN1
Alternative Name:	RSBN1 (RSBN1 Products)
Background:	Full Gene Name: round spermatid basic protein 1

Target Details

Synonyms: DKFZp781E21150,ROSBIN,RP11-324J2.1

Gene ID: 54665

Application Details

Application Notes: Immunohistochemistry (1:200-1:500)
The optimal working dilution should be determined by the end user.

Restrictions: For Research Use only

Handling

Format: Liquid

Buffer: In PBS, pH 7.2 (40 % glycerol, 0.02 % sodium azide)

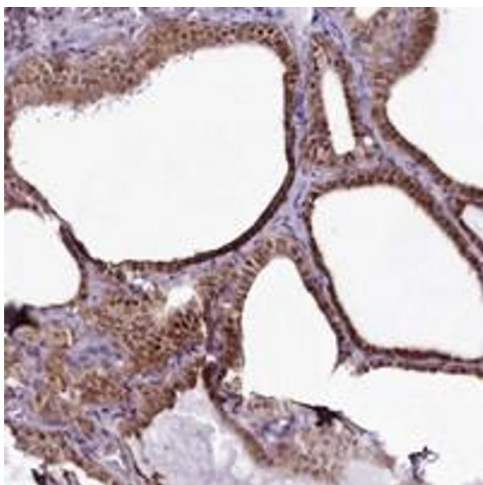
Preservative: Sodium azide

Precaution of Use: This product contains Sodium azide: a POISONOUS AND HAZARDOUS SUBSTANCE which should be handled by trained staff only.

Storage: 4 °C,-20 °C

Storage Comment: Store at 4°C. For long term storage store at -20°C.
Aliquot to avoid repeated freezing and thawing.

Images



Immunohistochemistry

Image 1. Immunohistochemical staining of human thyroid gland with RSBN1 polyclonal antibody shows moderate cytoplasmic and nuclear positivity in glandular cells at 1:200-1:500 dilution.