

Datasheet for ABIN5587286
anti-RSP01 antibody (N-Term)[Go to Product page](#)

2 Images

Overview

Quantity:	100 µg
Target:	RSP01
Binding Specificity:	N-Term
Reactivity:	Human, Rat, Mouse
Host:	Rabbit
Clonality:	Polyclonal
Conjugate:	This RSP01 antibody is un-conjugated
Application:	Western Blotting (WB), Immunohistochemistry (IHC), ELISA

Product Details

Purpose:	Rabbit polyclonal antibody raised against synthetic peptide of RSP01.
Immunogen:	A synthetic peptide corresponding to N-terminus 16 amino acids of human RSP01.
Cross-Reactivity:	Human, Mouse, Rat

Target Details

Target:	RSP01
Alternative Name:	RSP01 (RSP01 Products)
Background:	Full Gene Name: R-spondin homolog (Xenopus laevis) Synonyms: CRISTIN3,FLJ40906,RSPO
Gene ID:	284654

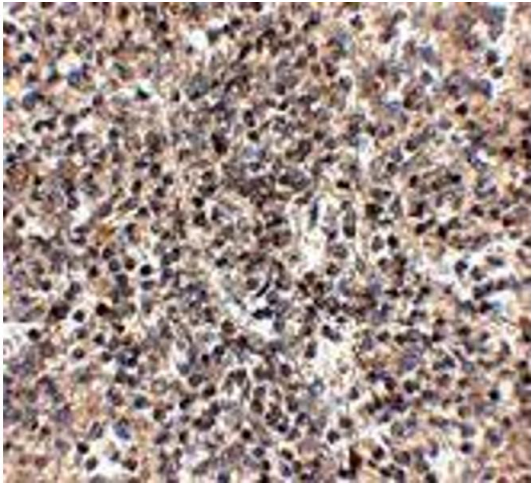
Application Details

Application Notes:	Western Blot (1-2 µg/mL) The optimal working dilution should be determined by the end user.
Restrictions:	For Research Use only

Handling

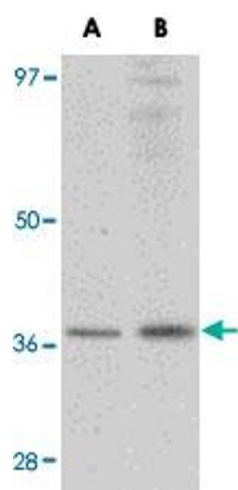
Format:	Liquid
Buffer:	In PBS (0.02 % sodium azide)
Preservative:	Sodium azide
Precaution of Use:	This product contains Sodium azide: a POISONOUS AND HAZARDOUS SUBSTANCE which should be handled by trained staff only.
Storage:	4 °C
Storage Comment:	Store at 4°C for up to one year. Aliquot to avoid repeated freezing and thawing.

Images



Immunohistochemistry

Image 1. Immunohistochemistry of RSP01 in human spleen tissue with RSP01 polyclonal antibody at 2.5 ug/mL .



Western Blotting

Image 2. Western blot analysis of RSP01 in rat spleen tissue lysate with RSP01 polyclonal antibody at (A) 1 and (B) 2 ug/mL .