

Datasheet for ABIN5587301

anti-RTP2 antibody**1** Image[Go to Product page](#)

Overview

Quantity:	100 µL
Target:	RTP2
Reactivity:	Human
Host:	Rabbit
Clonality:	Polyclonal
Conjugate:	This RTP2 antibody is un-conjugated
Application:	Immunohistochemistry (Paraffin-embedded Sections) (IHC (p))

Product Details

Purpose:	Rabbit polyclonal antibody raised against recombinant RTP2.
Immunogen:	Recombinant protein corresponding to amino acids of human RTP2.
Sequence:	YRIHVASRPD SGPHRAEFCE ACQEGIVHWK PSEKLLLEEV TTYTSEASKP RAQAGSGYNF
Isotype:	IgG
Cross-Reactivity:	Human

Target Details

Target:	RTP2
Alternative Name:	RTP2 (RTP2 Products)
Background:	Full Gene Name: receptor (chemosensory) transporter protein 2 Synonyms: MGC78665

Target Details

Gene ID: 344892

Application Details

Application Notes: Immunohistochemistry (1:50-1:200)
The optimal working dilution should be determined by the end user.

Restrictions: For Research Use only

Handling

Format: Liquid

Buffer: In PBS, pH 7.2 (40 % glycerol, 0.02 % sodium azide)

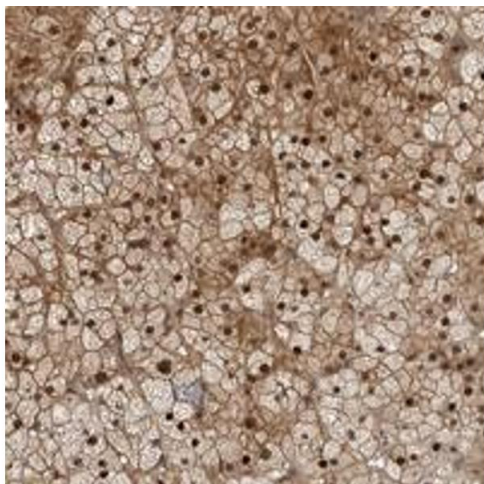
Preservative: Sodium azide

Precaution of Use: This product contains Sodium azide: a POISONOUS AND HAZARDOUS SUBSTANCE which should be handled by trained staff only.

Storage: 4 °C, -20 °C

Storage Comment: Store at 4°C. For long term storage store at -20°C.
Aliquot to avoid repeated freezing and thawing.

Images



Immunohistochemistry

Image 1. Immunohistochemical staining of human adrenal gland with RTP2 polyclonal antibody shows distinct cytoplasmic and nuclear positivity in cortical cells at 1:50-1:200 dilution.