



[Go to Product page](#)

Datasheet for ABIN5587306
anti-RUFY2 antibody

3 Images

Overview

Quantity:	100 µL
Target:	RUFY2
Reactivity:	Human
Host:	Rabbit
Clonality:	Polyclonal
Conjugate:	This RUFY2 antibody is un-conjugated
Application:	Western Blotting (WB), Immunofluorescence (IF), Immunohistochemistry (Paraffin-embedded Sections) (IHC (p))

Product Details

Purpose:	Rabbit polyclonal antibody raised against recombinant RUFY2.
Immunogen:	Recombinant protein corresponding to amino acids of human RUFY2.
Sequence:	EKAQMEAED EDEKYLQEQCLS KSDSLQKQIS QKEKQLVQLE TDLKIEKEWR QTLQE
Isotype:	IgG
Cross-Reactivity:	Human

Target Details

Target:	RUFY2
Alternative Name:	RUFY2 (RUFY2 Products)
Background:	Full Gene Name: RUN and FYVE domain containing 2

Target Details

Synonyms: FLJ10063,KIAA1537,RABIP4R,ZFYVE13

Gene ID: 55680

Application Details

Application Notes: Immunohistochemistry (1:50-1:200)
Western Blot (1:250-1:500)
Immunofluorescence (1-4 µg/mL)
The optimal working dilution should be determined by the end user.

Restrictions: For Research Use only

Handling

Format: Liquid

Buffer: In PBS, pH 7.2 (40 % glycerol, 0.02 % sodium azide)

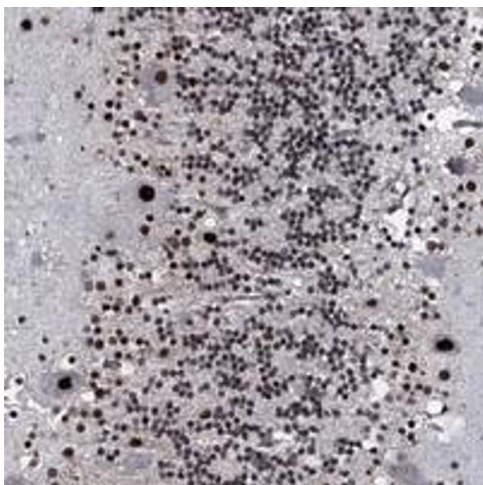
Preservative: Sodium azide

Precaution of Use: This product contains Sodium azide: a POISONOUS AND HAZARDOUS SUBSTANCE which should be handled by trained staff only.

Storage: 4 °C, -20 °C

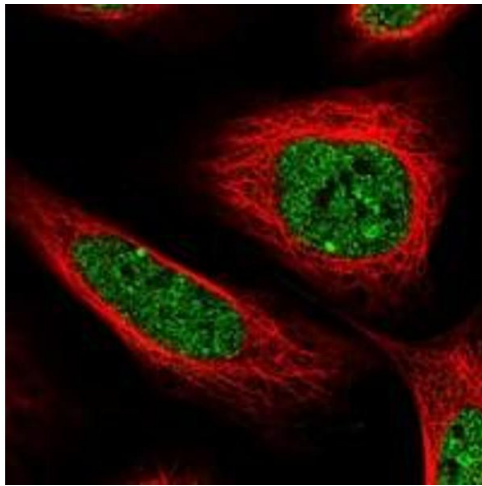
Storage Comment: Store at 4°C. For long term storage store at -20°C.
Aliquot to avoid repeated freezing and thawing.

Images



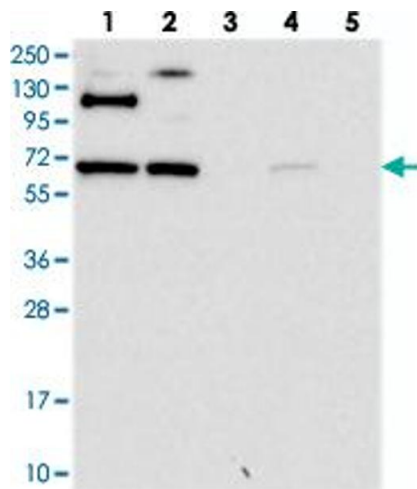
Immunohistochemistry

Image 1. Immunohistochemical staining of human cerebellum with RUFY2 polyclonal antibody shows strong nuclear positivity in Purkinje cells at 1:50-1:200 dilution.



Immunofluorescence

Image 2. Immunofluorescent staining of human cell line U-2 OS with RUFY2 polyclonal antibody at 1-4 ug/mL dilution shows positivity in nucleus but not nucleoli.



Western Blotting

Image 3. Western blot analysis of Lane 1: RT-4, Lane 2: U-251 MG, Lane 3: Human Plasma, Lane 4: Liver, Lane 5: Tonsil with RUFY2 polyclonal antibody at 1:250-1:500 dilution.