



[Go to Product page](#)

Datasheet for ABIN5587317
anti-RWDD2B antibody

2 Images

Overview

Quantity:	100 µL
Target:	RWDD2B
Reactivity:	Human
Host:	Rabbit
Clonality:	Polyclonal
Conjugate:	This RWDD2B antibody is un-conjugated
Application:	Immunohistochemistry (Paraffin-embedded Sections) (IHC (p)), Western Blotting (WB)

Product Details

Purpose:	Rabbit polyclonal antibody raised against recombinant RWDD2B.
Immunogen:	Recombinant protein corresponding to amino acids of human RWDD2B.
Sequence:	LIRHREDIPF DGTNDETERQ RKFSIFEEKV FSVNGARGNH MDFGQLYQFL NTKGCGDVFQ MFFGVEGQ
Isotype:	IgG
Cross-Reactivity:	Human

Target Details

Target:	RWDD2B
Alternative Name:	RWDD2B (RWDD2B Products)
Background:	Full Gene Name: RWD domain containing 2B

Target Details

Synonyms: C21orf6, GL011

Gene ID: 10069

Application Details

Application Notes: Immunohistochemistry (1:50-1:200)
Western Blot (1:250-1:500)
The optimal working dilution should be determined by the end user.

Restrictions: For Research Use only

Handling

Format: Liquid

Buffer: In PBS, pH 7.2 (40 % glycerol, 0.02 % sodium azide)

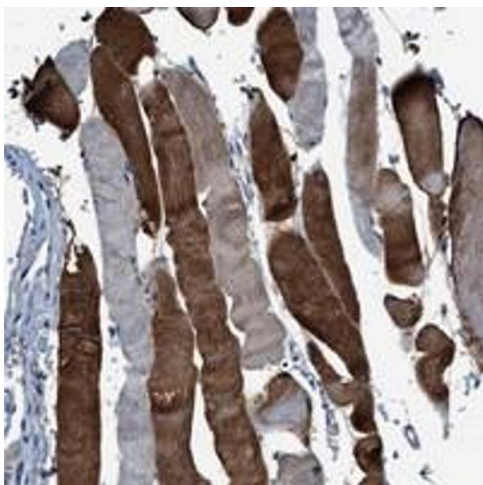
Preservative: Sodium azide

Precaution of Use: This product contains Sodium azide: a POISONOUS AND HAZARDOUS SUBSTANCE which should be handled by trained staff only.

Storage: 4 °C, -20 °C

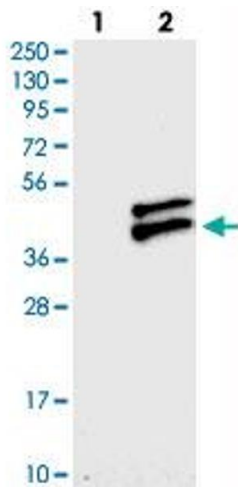
Storage Comment: Store at 4°C. For long term storage store at -20°C.
Aliquot to avoid repeated freezing and thawing.

Images



Immunohistochemistry

Image 1. Immunohistochemical staining of human skeletal muscle with RWDD2B polyclonal antibody shows strong cytoplasmic positivity in a heterogeneous staining pattern.



Western Blotting

Image 2. Western blot analysis of Lane 1: Negative control (vector only transfected HEK293T lysate), Lane 2: Over-expression Lysate (Co-expressed with a C-terminal myc-DDK tag (~3.1 kDa) in mammalian HEK293T cells) with RWDD2B polyclonal antibody .