

Datasheet for ABIN5587326

anti-RXFP2 antibody (3rd Cytoplasmic Domain)[Go to Product page](#)**1** Image

Overview

Quantity:	50 µg
Target:	RXFP2
Binding Specificity:	3rd Cytoplasmic Domain
Reactivity:	Human, Mouse, Gorilla
Host:	Rabbit
Clonality:	Polyclonal
Conjugate:	This RXFP2 antibody is un-conjugated
Application:	Immunohistochemistry (Paraffin-embedded Sections) (IHC (p))

Product Details

Purpose:	Rabbit polyclonal antibody raised against synthetic peptide of RXFP2.
Immunogen:	A synthetic peptide corresponding to 14 amino acids at 3rd cytoplasmic domain of human RXFP2.
Specificity:	BLAST analysis of the peptide immunogen showed no homology with other human proteins.
Cross-Reactivity:	Gorilla, Human, Mouse
Cross-Reactivity (Details):	BLAST analysis of the peptide immunogen showed no homology with other human proteins.

Target Details

Target:	RXFP2
Alternative Name:	RXFP2 (RXFP2 Products)

Target Details

Background:	Full Gene Name: relaxin/insulin-like family peptide receptor 2 Synonyms: GPR106,GREAT,INSL3R,LGR8,LGR8.1,RXFPR2
Gene ID:	122042
Pathways:	cAMP Metabolic Process , Myometrial Relaxation and Contraction

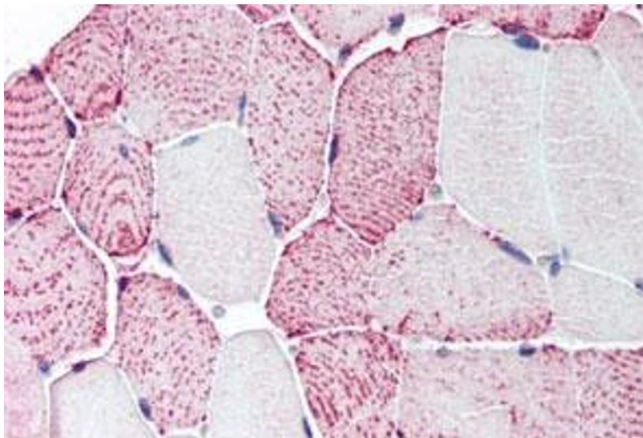
Application Details

Application Notes:	Immunohistochemistry (Formalin/PFA-fixed paraffin-embedded sections) (7 µg/mL) The optimal working dilution should be determined by the end user.
Restrictions:	For Research Use only

Handling

Format:	Liquid
Buffer:	In PBS (0.09 % sodium azide)
Preservative:	Sodium azide
Precaution of Use:	This product contains Sodium azide: a POISONOUS AND HAZARDOUS SUBSTANCE which should be handled by trained staff only.
Storage:	4 °C,-80 °C
Storage Comment:	Store at 4°C. For long term storage store at -80°C. Aliquot to avoid repeated freezing and thawing.

Images



Immunohistochemistry

Image 1. Immunohistochemical (Formalin/PFA-fixed paraffin-embedded sections) staining in human skeletal muscle with RXFP2 polyclonal antibody . Immunohistochemistry of formalin-fixed, paraffin-embedded tissue after heat-induced antigen retrieval.