

Datasheet for ABIN5587328

**anti-Relaxin 3 Receptor 1 antibody (2nd Cytoplasmic Domain)**[Go to Product page](#)**1** Image

## Overview

Quantity:	50 µg
Target:	Relaxin 3 Receptor 1 (RXFP3)
Binding Specificity:	2nd Cytoplasmic Domain
Reactivity:	Human, Rat, Hamster, Gorilla
Host:	Rabbit
Clonality:	Polyclonal
Conjugate:	This Relaxin 3 Receptor 1 antibody is un-conjugated
Application:	Immunohistochemistry (Paraffin-embedded Sections) (IHC (p))

## Product Details

Purpose:	Rabbit polyclonal antibody raised against synthetic peptide of RXFP3.
Immunogen:	A synthetic peptide corresponding to 20 amino acids at 2nd cytoplasmic domain of human RXFP3.
Specificity:	BLAST analysis of the peptide immunogen showed no homology with other human proteins, except VGLL4 (45 %).
Cross-Reactivity:	Gorilla, Hamster, Human, Rat
Cross-Reactivity (Details):	BLAST analysis of the peptide immunogen showed no homology with other human proteins, except VGLL4 (45 %).

## Target Details

Target:	Relaxin 3 Receptor 1 (RXFP3)
---------	------------------------------

## Target Details

Alternative Name:	RXFP3 ( <a href="#">RXFP3 Products</a> )
Background:	Full Gene Name: relaxin/insulin-like family peptide receptor 3 Synonyms: GPCR135,MGC141998,MGC142000,RLN3R1,RXFPR3,SALPR
Gene ID:	51289

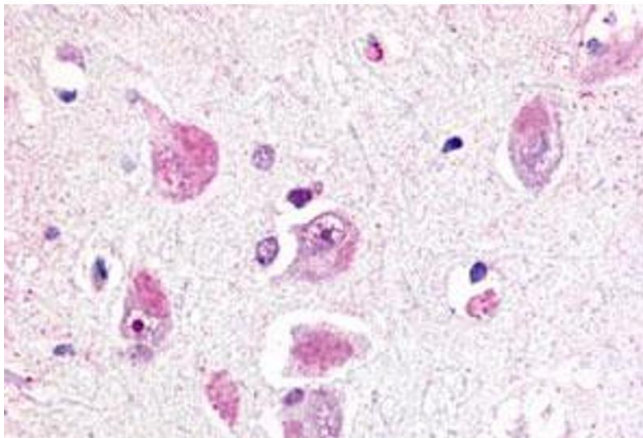
## Application Details

Application Notes:	Immunohistochemistry (Formalin/PFA-fixed paraffin-embedded sections) (14-28 µg/mL) The optimal working dilution should be determined by the end user.
Restrictions:	For Research Use only

## Handling

Format:	Liquid
Buffer:	In PBS (0.09 % sodium azide)
Preservative:	Sodium azide
Precaution of Use:	This product contains Sodium azide: a POISONOUS AND HAZARDOUS SUBSTANCE which should be handled by trained staff only.
Storage:	4 °C,-80 °C
Storage Comment:	Store at 4°C. For long term storage store at -80°C. Aliquot to avoid repeated freezing and thawing.

## Images



### Immunohistochemistry

**Image 1.** Immunohistochemical (Formalin/PFA-fixed paraffin-embedded sections) staining in human brain, neurons and glia with RXFP3 polyclonal antibody . Immunohistochemistry of formalin-fixed, paraffin-embedded tissue after heat-induced antigen retrieval.