



[Go to Product page](#)

Datasheet for ABIN5587384

anti-S1PR3 antibody (N-Term)

1 Image

Overview

Quantity:	50 µg
Target:	S1PR3
Binding Specificity:	N-Term
Reactivity:	Human, Gorilla
Host:	Rabbit
Clonality:	Polyclonal
Conjugate:	This S1PR3 antibody is un-conjugated
Application:	Immunohistochemistry (Paraffin-embedded Sections) (IHC (p))

Product Details

Purpose:	Rabbit polyclonal antibody raised against synthetic peptide of S1PR3.
Immunogen:	A synthetic peptide corresponding to 19 amino acid at N-terminus of human S1PR3.
Specificity:	BLAST analysis of the peptide immunogen showed no homology with other human proteins, except NAA16 (53 %).
Cross-Reactivity:	Gorilla, Human
Cross-Reactivity (Details):	BLAST analysis of the peptide immunogen showed no homology with other human proteins, except NAA16 (53 %).

Target Details

Target:	S1PR3
---------	-------

Target Details

Alternative Name:	S1PR3 (S1PR3 Products)
Background:	Full Gene Name: sphingosine-1-phosphate receptor 3 Synonyms: EDG-3,EDG3,FLJ37523,FLJ93220,LPB3,MGC71696,S1P3
Gene ID:	1903

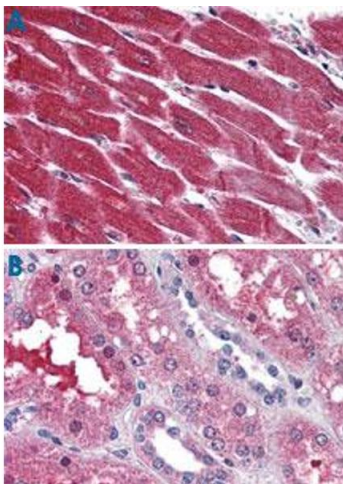
Application Details

Application Notes:	Immunohistochemistry (Formalin/PFA-fixed paraffin-embedded sections) (5 µg/mL) The optimal working dilution should be determined by the end user.
Restrictions:	For Research Use only

Handling

Format:	Liquid
Buffer:	In PBS (0.09 % sodium azide)
Preservative:	Sodium azide
Precaution of Use:	This product contains Sodium azide: a POISONOUS AND HAZARDOUS SUBSTANCE which should be handled by trained staff only.
Storage:	4 °C,-80 °C
Storage Comment:	Store at 4°C. For long term storage store at -80°C. Aliquot to avoid repeated freezing and thawing.

Images



Immunohistochemistry

Image 1. Immunohistochemistry (Formalin/PFA-fixed paraffin-embedded sections) of human heart (A) and human kidney tissue (B) with S1PR3 polyclonal antibody . Immunohistochemistry of formalin-fixed, paraffin-embedded tissue after heat-induced antigen retrieval.