

Datasheet for ABIN5587389
anti-S1PR4 antibody (C-Term)[Go to Product page](#)

2 Images

Overview

Quantity:	100 µg
Target:	S1PR4
Binding Specificity:	C-Term
Reactivity:	Human
Host:	Mouse
Clonality:	Monoclonal
Conjugate:	This S1PR4 antibody is un-conjugated
Application:	Western Blotting (WB), Immunofluorescence (IF), Flow Cytometry (FACS)

Product Details

Purpose:	Mouse monoclonal antibody raised against synthetic peptide of S1PR4.
Immunogen:	A synthetic peptide corresponding to C-terminus of S1PR4.
Clone:	1
Isotype:	IgG1
Cross-Reactivity:	Human
Characteristics:	Antibody Reactive Against Synthetic Peptide.

Target Details

Target:	S1PR4
Alternative Name:	S1PR4 (S1PR4 Products)

Target Details

Background: Full Gene Name: sphingosine-1-phosphate receptor 4
Synonyms: EDG6,LPC1,S1P4,SLP4

Gene ID: 8698

Application Details

Application Notes: Western blot (5 to 10 µg/mL)
The optimal working dilution should be determined by the end user.

Restrictions: For Research Use only

Handling

Format: Liquid

Buffer: In PBS (0.08 % sodium azide)

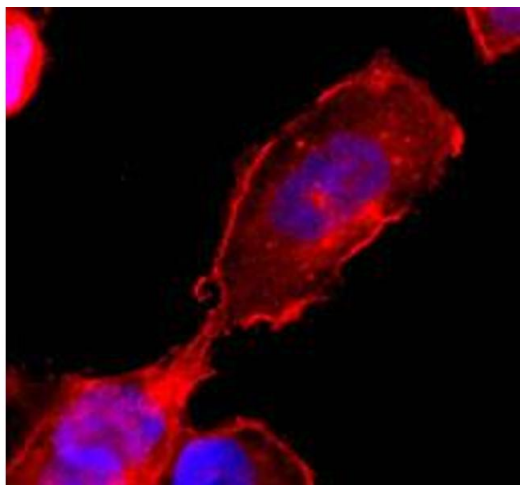
Preservative: Sodium azide

Precaution of Use: This product contains Sodium azide: a POISONOUS AND HAZARDOUS SUBSTANCE which should be handled by trained staff only.

Storage: -20 °C

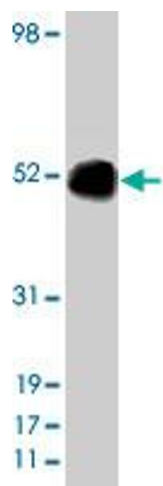
Storage Comment: Store at -20°C.
Aliquot to avoid repeated freezing and thawing.

Images



Immunofluorescence

Image 1. IF on transiently transfected CHO cells. Developed with S1PR4 monoclonal antibody, clone 1 , nuclei are stained with DAPI.



Western Blotting

Image 2. Western blot analysis using S1PR4 monoclonal antibody, clone 1 on cell lysate transfected with S1PR4 protein at 5 ug/mL .