

Datasheet for ABIN5587408

anti-SAC3D1 antibody**2** Images[Go to Product page](#)

Overview

Quantity:	100 µL
Target:	SAC3D1
Reactivity:	Human
Host:	Rabbit
Clonality:	Polyclonal
Conjugate:	This SAC3D1 antibody is un-conjugated
Application:	Immunofluorescence (IF), Immunohistochemistry (Paraffin-embedded Sections) (IHC (p))

Product Details

Purpose:	Rabbit polyclonal antibody raised against recombinant SAC3D1.
Immunogen:	Recombinant protein corresponding to amino acids of human SAC3D1.
Sequence:	AFREGNAARL FRLQLTLPYL PSCAVQCHVG HARREALARF ARAFSTPKGQ TLPLGFMVNL LALDGLREAR DLCQAHGLPL DGEERVVFLR GRYVEEGLPP ASTCKVLVE
Isotype:	IgG
Cross-Reactivity:	Human

Target Details

Target:	SAC3D1
Alternative Name:	SAC3D1 (SAC3D1 Products)
Background:	Full Gene Name: SAC3 domain containing 1

Target Details

Synonyms: HSU79266,SHD1

Gene ID: 29901

Application Details

Application Notes: Immunohistochemistry (1:200-1:500)
Immunofluorescence (1-4 µg/mL)
The optimal working dilution should be determined by the end user.

Restrictions: For Research Use only

Handling

Format: Liquid

Buffer: In PBS, pH 7.2, (40 % glycerol, 0.02 % sodium azide)

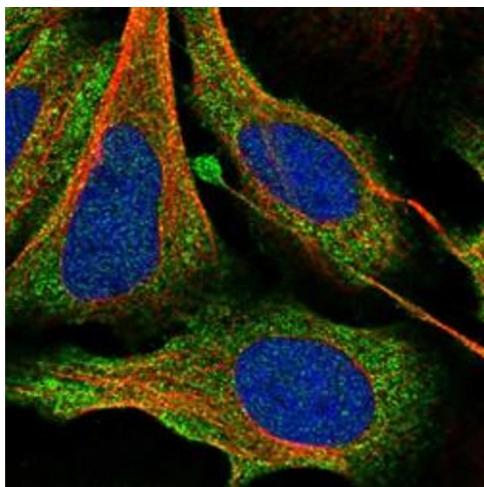
Preservative: Sodium azide

Precaution of Use: This product contains Sodium azide: a POISONOUS AND HAZARDOUS SUBSTANCE which should be handled by trained staff only.

Storage: 4 °C,-20 °C

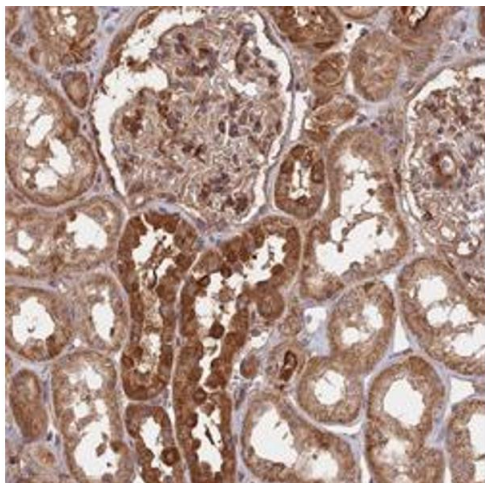
Storage Comment: Store at 4°C. For long term storage store at -20°C.
Aliquot to avoid repeated freezing and thawing.

Images



Immunofluorescence

Image 1. Immunofluorescent staining of human cell line U-2 OS with SAC3D1 polyclonal antibody at 1-4 ug/mL dilution shows positivity in cytoplasm.



Immunohistochemistry

Image 2. Immunohistochemical staining of human kidney with SAC3D1 polyclonal antibody shows strong cytoplasmic positivity in cells in tubules at 1:200-1:500 dilution.