



[Go to Product page](#)

Datasheet for ABIN5587413
anti-SAG antibody (C-Term)

2 Images

Overview

Quantity:	50 µL
Target:	SAG
Binding Specificity:	C-Term
Reactivity:	Cow
Host:	Mouse
Clonality:	Monoclonal
Conjugate:	This SAG antibody is un-conjugated
Application:	Western Blotting (WB), Immunofluorescence (IF), Immunohistochemistry (Paraffin-embedded Sections) (IHC (p))

Product Details

Purpose:	Mouse monoclonal antibody raised against partial recombinant bovine SAG.
Immunogen:	Recombinant protein corresponding to the C-terminus region of bovine SAG.
Clone:	S128
Isotype:	IgG1
Cross-Reactivity:	Cow, Human, Mouse, Pig, Rat

Target Details

Target:	SAG
Alternative Name:	SAG (SAG Products)

Target Details

Background: Full Gene Name: S-antigen, retina and pineal gland (arrestin)

Gene ID: 280922

Pathways: [Regulation of G-Protein Coupled Receptor Protein Signaling](#)

Application Details

Application Notes: Immunofluorescence (1:1000)
Immunohistochemistry (Formalin/PFA-fixed paraffin-embedded sections) (1:100)
Western Blot (1:5000)
The optimal working dilution should be determined by the end user.

Restrictions: For Research Use only

Handling

Format: Liquid

Buffer: In PBS (10 mM sodium azide)

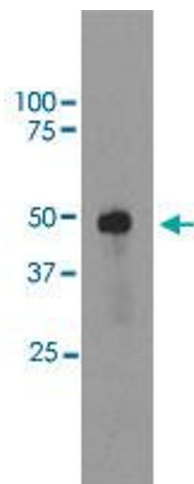
Preservative: Sodium azide

Precaution of Use: This product contains Sodium azide: a POISONOUS AND HAZARDOUS SUBSTANCE which should be handled by trained staff only.

Storage: 4 °C, -20 °C

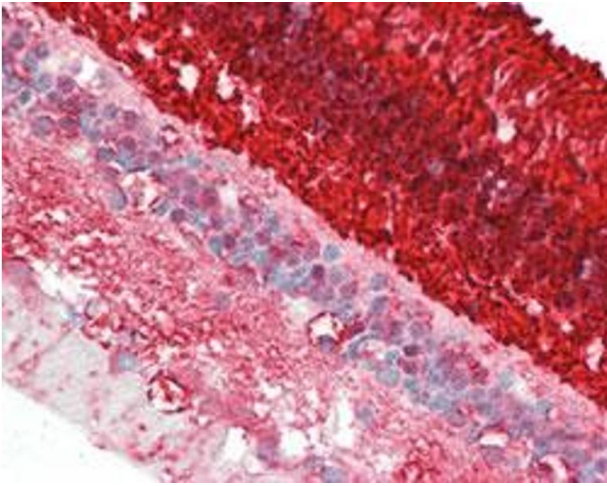
Storage Comment: Store at 4°C. For long term storage store at -20°C.
Aliquot to avoid repeated freezing and thawing.

Images



Western Blotting

Image 1. Western blot analysis of bovine retinal extracts using SAG monoclonal antibody, clone S128 at 1:5000 dilution.



Immunohistochemistry

Image 2. Immunohistochemical staining (Formalin-fixed paraffin-embedded sections) of human retina tissue with SAG monoclonal antibody, clone S128 at 1:100 dilution.