



[Go to Product page](#)

Datasheet for ABIN5587421
anti-SAMD10 antibody

1 Image

Overview

Quantity:	100 µL
Target:	SAMD10
Reactivity:	Human
Host:	Rabbit
Clonality:	Polyclonal
Conjugate:	This SAMD10 antibody is un-conjugated
Application:	Immunohistochemistry (Paraffin-embedded Sections) (IHC (p))

Product Details

Purpose:	Rabbit polyclonal antibody raised against recombinant SAMD10.
Immunogen:	Recombinant protein corresponding to amino acids of human SAMD10.
Sequence:	MFTELRSKLS PPRGRAGAVR AGFGERRDVD ATAHFSFCRT LLEHTVSAES IPCHLPRTPG TS
Isotype:	IgG
Cross-Reactivity:	Human

Target Details

Target:	SAMD10
Alternative Name:	SAMD10 (SAMD10 Products)
Background:	Full Gene Name: sterile alpha motif domain containing 10 Synonyms: C20orf136,dJ591C20,dJ591C20.7

Target Details

Gene ID: 140700

Application Details

Application Notes: Immunohistochemistry (1:20-1:50)
The optimal working dilution should be determined by the end user.

Restrictions: For Research Use only

Handling

Format: Liquid

Buffer: In PBS, pH 7.2 (40 % glycerol, 0.02 % sodium azide)

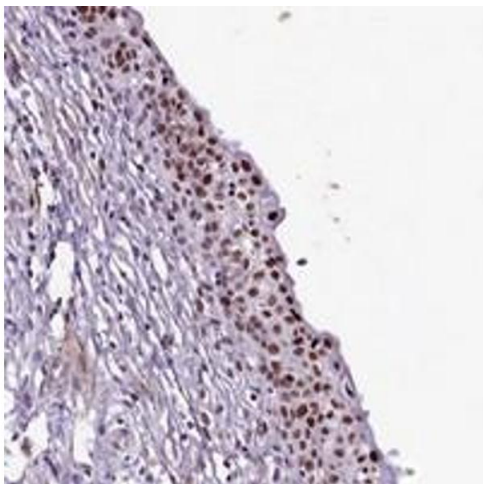
Preservative: Sodium azide

Precaution of Use: This product contains Sodium azide: a POISONOUS AND HAZARDOUS SUBSTANCE which should be handled by trained staff only.

Storage: 4 °C,-20 °C

Storage Comment: Store at 4°C. For long term storage store at -20°C.
Aliquot to avoid repeated freezing and thawing.

Images



Immunohistochemistry

Image 1. Immunohistochemical staining of human urinary bladder with SAMD10 polyclonal antibody shows strong nuclear positivity in urothelial cells.