



[Go to Product page](#)

Datasheet for ABIN5587436
anti-SAPCD2 antibody

2 Images

Overview

Quantity:	100 µL
Target:	SAPCD2
Reactivity:	Human
Host:	Rabbit
Clonality:	Polyclonal
Conjugate:	This SAPCD2 antibody is un-conjugated
Application:	Immunohistochemistry (Paraffin-embedded Sections) (IHC (p)), Immunofluorescence (IF)

Product Details

Purpose:	Rabbit polyclonal antibody raised against recombinant SAPCD2.
Immunogen:	Recombinant protein corresponding to amino acids of human SAPCD2.
Sequence:	ELEQEKEVLL QGLEMMARGR DWYQQQLQRV QERQRRLGQS RASADFGAAG SPRPLGRLLP KVQEVARC
Isotype:	IgG
Cross-Reactivity:	Human

Target Details

Target:	SAPCD2
Alternative Name:	SAPCD2 (SAPCD2 Products)
Background:	Full Gene Name: suppressor APC domain containing 2

Target Details

Synonyms: C9orf140,p42.3

Gene ID: 89958

Application Details

Application Notes: Immunohistochemistry (1:1000-1:2500)
Immunofluorescence (1-4 µg/mL)
The optimal working dilution should be determined by the end user.

Restrictions: For Research Use only

Handling

Format: Liquid

Buffer: In PBS, pH 7.2 (40 % glycerol, 0.02 % sodium azide)

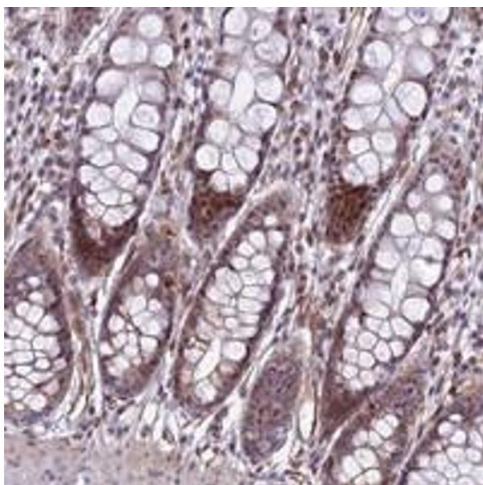
Preservative: Sodium azide

Precaution of Use: This product contains Sodium azide: a POISONOUS AND HAZARDOUS SUBSTANCE which should be handled by trained staff only.

Storage: 4 °C,-20 °C

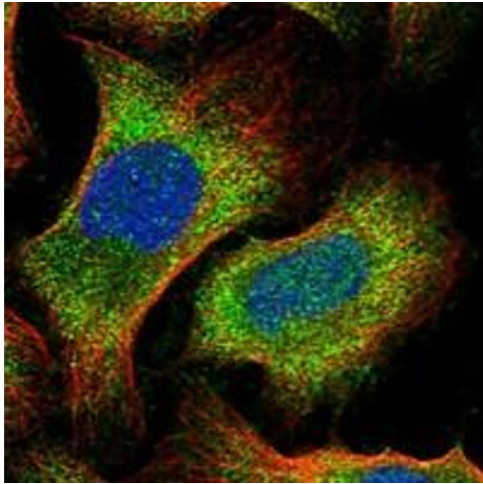
Storage Comment: Store at 4°C. For long term storage store at -20°C.
Aliquot to avoid repeated freezing and thawing.

Images



Immunohistochemistry

Image 1. Immunohistochemical staining of human rectum with SAPCD2 polyclonal antibody shows moderate cytoplasmic and nuclear positivity in glandular cells.



Immunofluorescence

Image 2. Immunofluorescent staining of human cell line U-2 OS with SAPCD2 polyclonal antibody at 1-4 ug/mL dilution shows positivity in nucleus and cytoplasm.