

Datasheet for ABIN5587502
anti-SCN3A antibody (Internal Region)[Go to Product page](#)

1 Image

Overview

Quantity:	50 µg
Target:	SCN3A
Binding Specificity:	Internal Region
Reactivity:	Human, Chimpanzee
Host:	Rabbit
Clonality:	Polyclonal
Conjugate:	This SCN3A antibody is un-conjugated
Application:	Immunohistochemistry (Paraffin-embedded Sections) (IHC (p))

Product Details

Purpose:	Rabbit polyclonal antibody raised against synthetic peptide of SCN3A.
Immunogen:	A synthetic peptide corresponding to 18 amino acid at internal region of human SCN3A.
Specificity:	BLAST analysis of the peptide immunogen showed no homology with other human proteins.
Cross-Reactivity:	Chimpanzee, Human
Cross-Reactivity (Details):	BLAST analysis of the peptide immunogen showed no homology with other human proteins.

Target Details

Target:	SCN3A
Alternative Name:	SCN3A (SCN3A Products)
Background:	Full Gene Name: sodium channel, voltage-gated, type III, alpha subunit

Target Details

Synonyms: KIAA1356,NAC3,Nav1.3

Gene ID: 6328

Application Details

Application Notes: Immunohistochemistry (Formalin/PFA-fixed paraffin-embedded sections) (15-20 µg/mL)
The optimal working dilution should be determined by the end user.

Restrictions: For Research Use only

Handling

Format: Liquid

Buffer: In PBS (0.09 % sodium azide)

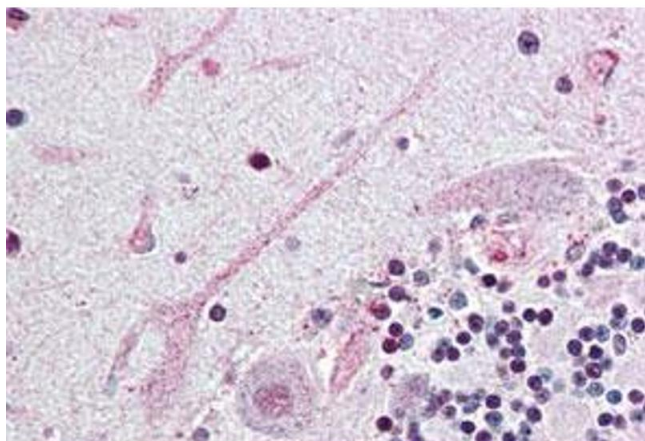
Preservative: Sodium azide

Precaution of Use: This product contains Sodium azide: a POISONOUS AND HAZARDOUS SUBSTANCE which should be handled by trained staff only.

Storage: 4 °C,-80 °C

Storage Comment: Store at 4°C. For long term storage store at -80°C.
Aliquot to avoid repeated freezing and thawing.

Images



Immunohistochemistry

Image 1. Immunohistochemistry (Formalin/PFA-fixed paraffin-embedded sections) of human brain, cerebellum with SCN3A polyclonal antibody . Immunohistochemistry of formalin-fixed, paraffin-embedded tissue after heat-induced antigen retrieval.