

Datasheet for ABIN5587627  
**anti-SEC11C antibody**[Go to Product page](#)

## 2 Images

## Overview

Quantity:	100 µL
Target:	SEC11C
Reactivity:	Human
Host:	Rabbit
Clonality:	Polyclonal
Conjugate:	This SEC11C antibody is un-conjugated
Application:	Western Blotting (WB), Immunohistochemistry (Paraffin-embedded Sections) (IHC (p))

## Product Details

Purpose:	Rabbit polyclonal antibody raised against recombinant SEC11C.
Immunogen:	Recombinant protein corresponding to amino acids of human SEC11C.
Sequence:	MVRAGAVGAH LPASGLDIFG DLKKMNKRQL YYQV
Isotype:	IgG
Cross-Reactivity:	Human

## Target Details

Target:	SEC11C
Alternative Name:	SEC11C ( <a href="#">SEC11C Products</a> )
Background:	Full Gene Name: SEC11 homolog C (S. cerevisiae) Synonyms: SEC11L3,SPC21,SPCS4C

## Target Details

Gene ID:	90701
Pathways:	<a href="#">Peptide Hormone Metabolism</a>

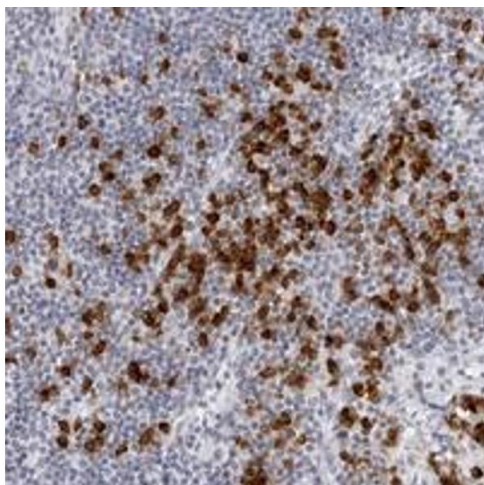
## Application Details

Application Notes:	Immunohistochemistry (1:50-1:200) The optimal working dilution should be determined by the end user.
Restrictions:	For Research Use only

## Handling

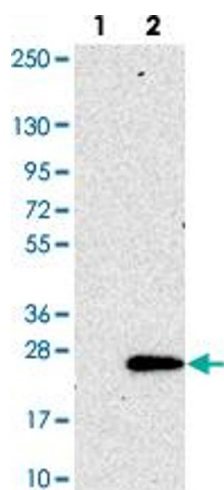
Format:	Liquid
Buffer:	In PBS, pH 7.2 (40 % glycerol, 0.02 % sodium azide)
Preservative:	Sodium azide
Precaution of Use:	This product contains Sodium azide: a POISONOUS AND HAZARDOUS SUBSTANCE which should be handled by trained staff only.
Storage:	4 °C, -20 °C
Storage Comment:	Store at 4°C. For long term storage store at -20°C. Aliquot to avoid repeated freezing and thawing.

## Images



### Immunohistochemistry

**Image 1.** Immunohistochemical staining of human lymph node with SEC11C polyclonal antibody shows strong cytoplasmic positivity in subsets of lymphoid cells outside reaction centra at 1:50-1:200 dilution.



### Western Blotting

**Image 2.** Western blot analysis of Lane 1: Negative control (vector only transfected HEK293T lysate). Lane 2: Over-expression lysate (Co-expressed with a C-terminal myc-DDK tag (~3.1 kDa) in mammalian HEK293T cells with SEC11C polyclonal antibody .