

Datasheet for ABIN5587628

anti-SEC14L1 antibody[Go to Product page](#)**1** Image

Overview

Quantity:	100 µL
Target:	SEC14L1
Reactivity:	Human
Host:	Rabbit
Clonality:	Polyclonal
Conjugate:	This SEC14L1 antibody is un-conjugated
Application:	Immunohistochemistry (Paraffin-embedded Sections) (IHC (p))

Product Details

Purpose:	Rabbit polyclonal antibody raised against recombinant SEC14L1.
Immunogen:	Recombinant protein corresponding to amino acids of human SEC14L1.
Sequence:	SVFKGAPHEI LIQIVDASSV ITWDFDVCKG DIVFNIYHSK RSPQPPKKDS LGAHSITSPG GNNVQLIDKV WQLGRDYSMV ESPLICKEGE SVQG
Isotype:	IgG
Cross-Reactivity:	Human

Target Details

Target:	SEC14L1
Alternative Name:	SEC14L1 (SEC14L1 Products)
Background:	Full Gene Name: SEC14-like 1 (S. cerevisiae)

Target Details

Synonyms: DKFZp686C06176,PRELID4A,SEC14L

Gene ID: 6397

Application Details

Application Notes: Immunohistochemistry (1:50-1:200)
The optimal working dilution should be determined by the end user.

Restrictions: For Research Use only

Handling

Format: Liquid

Buffer: In PBS, pH 7.2 (40 % glycerol, 0.02 % sodium azide)

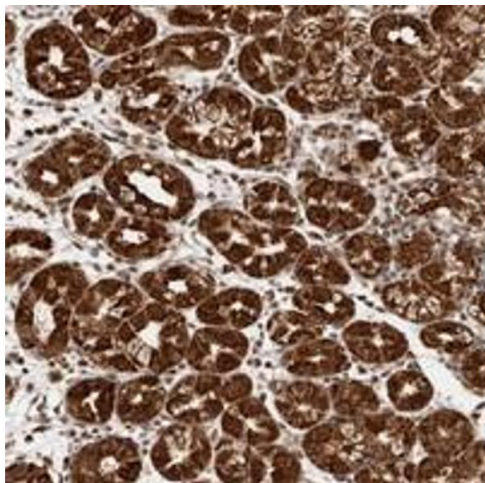
Preservative: Sodium azide

Precaution of Use: This product contains Sodium azide: a POISONOUS AND HAZARDOUS SUBSTANCE which should be handled by trained staff only.

Storage: 4 °C,-20 °C

Storage Comment: Store at 4°C. For long term storage store at -20°C.
Aliquot to avoid repeated freezing and thawing.

Images



Immunohistochemistry

Image 1. Immunohistochemical staining of human stomach with SEC14L1 polyclonal antibody shows strong granular cytoplasmic and nuclear positivity in glandular cells at 1:50-1:200 dilution.