

Datasheet for ABIN5587649

anti-Selectin E/CD62e antibody (N-Term)[Go to Product page](#)**1** Image

Overview

| | |
|----------------------|---|
| Quantity: | 100 µg |
| Target: | Selectin E/CD62e (SELE) |
| Binding Specificity: | N-Term |
| Reactivity: | Human, Mouse, Rat, Monkey, Cow |
| Host: | Rabbit |
| Clonality: | Polyclonal |
| Conjugate: | This Selectin E/CD62e antibody is un-conjugated |
| Application: | Western Blotting (WB), ELISA |

Product Details

| | |
|-------------------|--|
| Purpose: | Rabbit polyclonal antibody raised against synthetic peptide of SELE. |
| Immunogen: | A synthetic peptide corresponding to N-terminus of human SELE. |
| Specificity: | This antibody recognizes ~65 KDa of SELE. |
| Cross-Reactivity: | Cow, Human, Monkey, Mouse, Rat |

Target Details

| | |
|-------------------|--|
| Target: | Selectin E/CD62e (SELE) |
| Alternative Name: | SELE (SELE Products) |
| Background: | Full Gene Name: selectin E Synonyms: CD62E,ELAM,ELAM1,ESEL,LECAM2 |

Target Details

| | |
|-----------|---|
| Gene ID: | 6401 |
| Pathways: | Thromboxane A2 Receptor Signaling |

Application Details

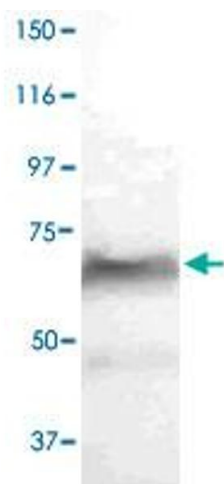
| | |
|--------------------|---|
| Application Notes: | Western Blot (0.1-1 µg/mL) ELISA (0.01-0.1 µg/mL) Immunoprecipitation (2-5 µg/mL) Immunohistochemistry (2-5 µg/mL) The optimal working dilution should be determined by the end user. |
|--------------------|---|

| | |
|---------------|-----------------------|
| Restrictions: | For Research Use only |
|---------------|-----------------------|

Handling

| | |
|--------------------|---|
| Format: | Liquid |
| Buffer: | In TBS, pH 7.2 (BSA, 10 % Proclin300) |
| Preservative: | ProClin |
| Precaution of Use: | This product contains ProClin: a POISONOUS AND HAZARDOUS SUBSTANCE which should be handled by trained staff only. |
| Storage: | 4 °C,-20 °C |
| Storage Comment: | Store at 4°C. For long term storage store at -20°C or lower. Aliquot to avoid repeated freezing and thawing. |

Images



Western Blotting

Image 1. The whole cell lysate derived from Jurkat was separated in 10% SDS-PAGE, transferred onto NC membrane, and immunoblotted by SELE polyclonal antibody at 1 : 500 . An immunoreactive band around ~65 kDa was observed.