

Datasheet for ABIN5587752  
**anti-SERPINB5 antibody**

## 2 Images

[Go to Product page](#)

## Overview

Quantity:	100 µL
Target:	SERPINB5
Reactivity:	Human
Host:	Mouse
Clonality:	Monoclonal
Conjugate:	This SERPINB5 antibody is un-conjugated
Application:	Western Blotting (WB), ELISA, Immunofluorescence (IF), Immunocytochemistry (ICC)

## Product Details

Purpose:	Mouse monoclonal antibody raised against full length recombinant SERPINB5.
Immunogen:	Recombinant protein corresponding to full length human SERPINB5.
Clone:	AT2N6
Isotype:	IgG2b
Cross-Reactivity:	Human

## Target Details

Target:	SERPINB5
Alternative Name:	SERPINB5 ( <a href="#">SERPINB5 Products</a> )
Background:	Full Gene Name: serpin peptidase inhibitor, clade B (ovalbumin), member 5 Synonyms: PI5,maspin

## Target Details

Gene ID: 5268

Pathways: [p53 Signaling](#)

## Application Details

Application Notes: The optimal working dilution should be determined by the end user.

Restrictions: For Research Use only

## Handling

Format: Liquid

Buffer: In PBS, pH 7.4 (10 % glycerol, 0.02 % sodium azide).

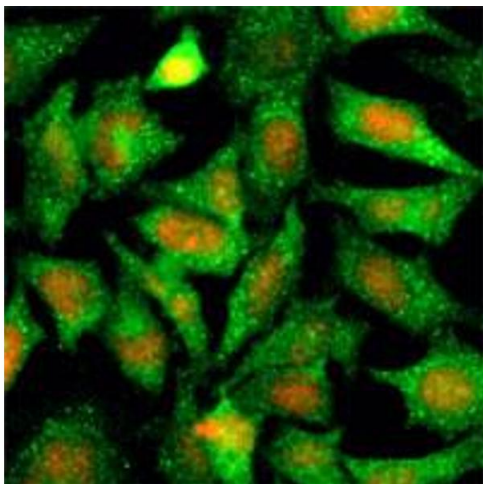
Preservative: Sodium azide

Precaution of Use: This product contains Sodium azide: a POISONOUS AND HAZARDOUS SUBSTANCE which should be handled by trained staff only.

Storage: -20 °C,-80 °C

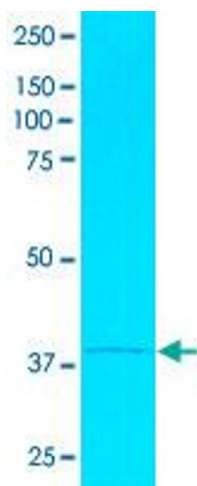
Storage Comment: Store at 2°C to 8°C for 1 week. For long term storage, aliquot and store at -20°C to -80°C. Aliquot to avoid repeated freezing and thawing.

## Images



### Immunofluorescence

**Image 1.** Immunofluorescence of human HeLa cells stained with PI (Red) and SERPINB5 monoclonal antibody, clone AT2N6 (1 : 500) with Alexa 488 (Green).



### Western Blotting

**Image 2.** Western blot analysis from cell lysates of HeLa (20 ug) were resolved by SDS-PAGE, transferred to NC membrane and probed with SERPINB5 monoclonal antibody, clone AT2N6 (1 : 1000). Proteins were visualized using a goat anti-mouse secondary antibody conjugated to HRP and an ECL detection system.