

Datasheet for ABIN5587800  
**anti-SFRS17A antibody (N-Term)**[Go to Product page](#)

## 1 Image

## Overview

Quantity:	100 µL
Target:	SFRS17A (AKAP17A)
Binding Specificity:	N-Term
Reactivity:	Human
Host:	Rabbit
Clonality:	Polyclonal
Conjugate:	This SFRS17A antibody is un-conjugated
Application:	Western Blotting (WB), Immunohistochemistry (Paraffin-embedded Sections) (IHC (p))

## Product Details

Purpose:	Rabbit polyclonal antibody raised against synthetic peptide of human SFRS17A.
Immunogen:	A synthetic peptide corresponding to N-terminus of human SFRS17A.
Sequence:	NWEVMERLKG MVQNHQFSTL RISKSTMDFI RFEGEVENKS LVKSFLACLD
Cross-Reactivity:	Human

## Target Details

Target:	SFRS17A (AKAP17A)
Alternative Name:	SFRS17A ( <a href="#">AKAP17A Products</a> )
Background:	Full Gene Name: splicing factor, arginine/serine-rich 17A Synonyms: 721P,CCDC133,CXYorf3,DXYS155E,MGC125365,MGC125366,MGC39904,XE7,XE7Y

## Target Details

Gene ID:	8227
NCBI Accession:	<a href="#">NM_005088</a>

## Application Details

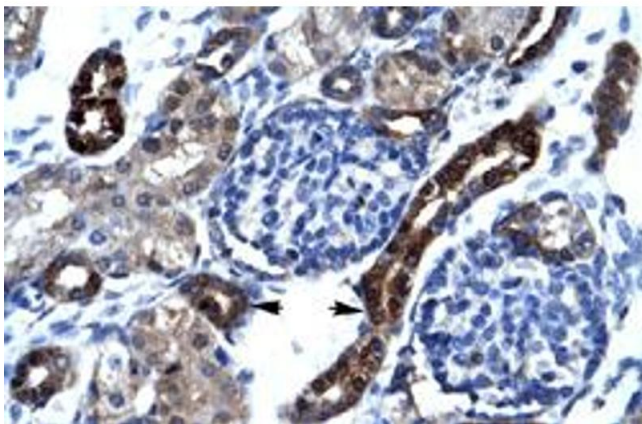
Application Notes:	Immunohistochemistry (Formalin/PFA-fixed paraffin-embedded sections) (4-8 µg/mL) Western Blot (0.2-1 µg/mL) The optimal working dilution should be determined by the end user.
--------------------	--------------------------------------------------------------------------------------------------------------------------------------------------------------------------------------

Restrictions:	For Research Use only
---------------	-----------------------

## Handling

Format:	Liquid
Buffer:	In PBS (2 % sucrose, 0.09 % sodium azide).
Preservative:	Sodium azide
Precaution of Use:	This product contains Sodium azide: a POISONOUS AND HAZARDOUS SUBSTANCE which should be handled by trained staff only.
Storage:	4 °C,-20 °C
Storage Comment:	Store at 4°C. For long term storage store at -20°C. Aliquot to avoid repeated freezing and thawing.

## Images



### Immunohistochemistry

**Image 1.** Immunohistochemical staining (Formalin-fixed paraffin-embedded sections) of human kidney with SFRS17A polyclonal antibody at 4-8 µg/mL working concentration.