

Datasheet for ABIN5587806

**anti-Surfactant Protein A1 antibody (C-Term)**[Go to Product page](#)**1** Image

## Overview

Quantity:	100 µg
Target:	Surfactant Protein A1 (SFTPA1)
Binding Specificity:	C-Term
Reactivity:	Mouse
Host:	Rabbit
Clonality:	Polyclonal
Conjugate:	This Surfactant Protein A1 antibody is un-conjugated
Application:	Western Blotting (WB), Immunohistochemistry (Paraffin-embedded Sections) (IHC (p))

## Product Details

Purpose:	Rabbit polyclonal antibody raised against synthetic peptide of Sftpa1.
Immunogen:	A synthetic peptide corresponding to amino acids at C-terminus of mouse Sftpa1.
Isotype:	IgG
Specificity:	It identical to the related rat sequence.
Cross-Reactivity:	Mouse, Rat

## Target Details

Target:	Surfactant Protein A1 (SFTPA1)
Alternative Name:	Sftpa1 ( <a href="#">SFTPA1 Products</a> )
Background:	Full Gene Name: surfactant associated protein A1

## Target Details

Synonyms: SP-A,Sftp-1,Sftp1

Gene ID: 20387

## Application Details

Application Notes: Western Blot (1 µg/mL)  
Immunohistochemistry (Formalin/PFA-fixed paraffin-embedded sections) (1 µg/mL)  
The optimal working dilution should be determined by the end user.

Restrictions: For Research Use only

## Handling

Format: Lyophilized

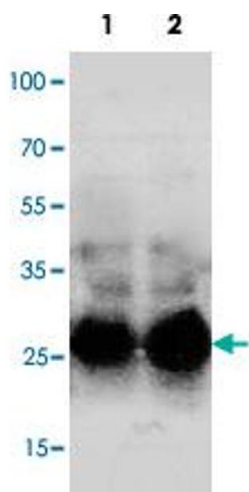
Buffer: Lyophilized from 0.9 mg NaCl, 0.2 mg Na<sub>2</sub>HPO<sub>4</sub> (5 mg BSA, 0.05 mg sodium azide, 0.05 mg Thimerosal)

Preservative: Sodium azide, Thimerosal (Merthiolate)

Precaution of Use: This product contains Thimerosal (Merthiolate) and Sodium azide: POISONOUS AND HAZARDOUS SUBSTANCES which should be handled by trained staff only.

Storage: -20 °C

Storage Comment: Store at -20°C on dry atmosphere.  
After reconstitution with 200 uL of deionized water and concentration will be 500 ug/mL, store at -20°C or lower.  
Aliquot to avoid repeated freezing and thawing.



Western Blotting

**Image 1.** Western blot analysis of mouse lung with Sftpa1 polyclonal antibody .