

Datasheet for ABIN5587827  
**anti-Shugoshin antibody**[Go to Product page](#)

## 2 Images

## Overview

Quantity:	100 µL
Target:	Shugoshin (SGOL1)
Reactivity:	Schizosaccharomyces pombe
Host:	Rabbit
Clonality:	Polyclonal
Conjugate:	This Shugoshin antibody is un-conjugated
Application:	Western Blotting (WB), Immunofluorescence (IF), Immunocytochemistry (ICC)

## Product Details

Purpose:	Rabbit polyclonal antibody raised against recombinant Sgo1.
Immunogen:	Recombinant protein corresponding to <i>Schizosaccharomyces pombe</i> Sgo1.
Cross-Reactivity:	Schizosaccharomyces pombe

## Target Details

Target:	Shugoshin (SGOL1)
Alternative Name:	sgo1 ( <a href="#">SGOL1 Products</a> )
Background:	Full Gene Name: shugoshin Sgo1
Gene ID:	2541326
Pathways:	<a href="#">Maintenance of Protein Location</a>

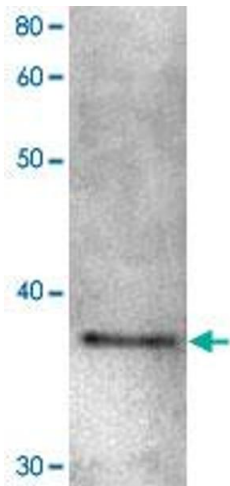
## Application Details

Application Notes:	Western Blot (1:1000) Immunofluorescence (1:100) The optimal working dilution should be determined by the end user.
Restrictions:	For Research Use only

## Handling

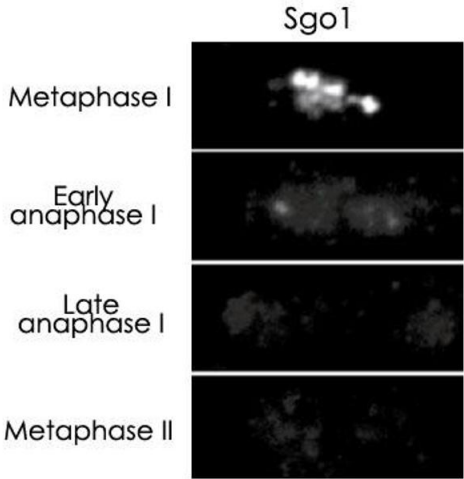
Format:	Liquid
Buffer:	In antiserum (0.05 % sodium azide)
Preservative:	Sodium azide
Precaution of Use:	This product contains Sodium azide: a POISONOUS AND HAZARDOUS SUBSTANCE which should be handled by trained staff only.
Storage:	-20 °C
Storage Comment:	Store at -20°C. Aliquot to avoid repeated freezing and thawing.

## Images



### Western Blotting

**Image 1.** Detection of Shugoshin 1 protein by Western blotting. Sample : Extract of *S. pombe* MP111 cells. Sgo1 polyclonal antibody was diluted 1000 fold before use.



**Image 2.** Immunostaining of Shugoshin 1 in synchronized diploid fission yeast. Sgo 1 protein was detected with Sgo1 polyclonal antibody and Alexa-488-conjugated anti-rabbit antibody.