



Datasheet for ABIN5587830  
**anti-SGSM1 antibody**



[Go to Product page](#)

1 Image

Overview

Quantity:	100 µL
Target:	SGSM1
Reactivity:	Human
Host:	Rabbit
Clonality:	Polyclonal
Conjugate:	This SGSM1 antibody is un-conjugated
Application:	Immunohistochemistry (Paraffin-embedded Sections) (IHC (p))

Product Details

Purpose:	Rabbit polyclonal antibody raised against recombinant SGSM1.
Immunogen:	Recombinant protein corresponding to amino acids of human SGSM1.
Sequence:	SPDSGHPSSH NFSSGLSEHS EPSLSTEDSV LDAQRNTPTV LRPRDGSVDD RQSSEATTSQ DEAPREELAV QDSLES DLLA NESMDEFMSI TGSLDMALPE KDDVVMEGWR SSETEKHGQA DSEDNLSEEP EMESLFPALA SLAVTT
Isotype:	IgG
Cross-Reactivity:	Human

Target Details

Target:	SGSM1
Alternative Name:	SGSM1 ( <a href="#">SGSM1 Products</a> )

## Target Details

Background: Full Gene Name: small G protein signaling modulator 1  
Synonyms: KIAA1941,MGC133298,RUTBC2

Gene ID: 129049

## Application Details

Application Notes: Immunohistochemistry (1:10-1:20)  
The optimal working dilution should be determined by the end user.

Restrictions: For Research Use only

## Handling

Format: Liquid

Buffer: In PBS, pH 7.2 (40 % glycerol, 0.02 % sodium azide)

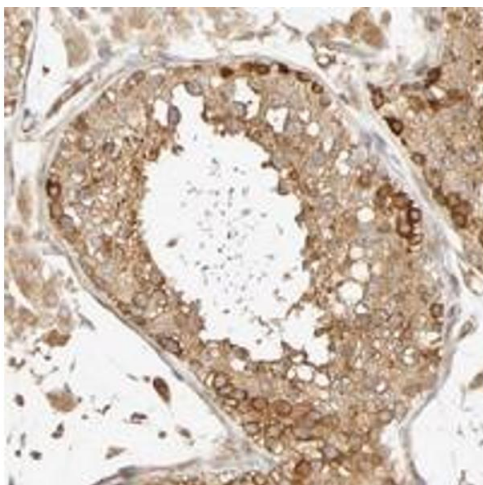
Preservative: Sodium azide

Precaution of Use: This product contains Sodium azide: a POISONOUS AND HAZARDOUS SUBSTANCE which should be handled by trained staff only.

Storage: 4 °C,-20 °C

Storage Comment: Store at 4°C. For long term storage store at -20°C.  
Aliquot to avoid repeated freezing and thawing.

## Images



### Immunohistochemistry

**Image 1.** Immunohistochemical staining of human testis with SGSM1 polyclonal antibody shows strong cytoplasmic positivity in cells in seminiferous ducts and moderate in Leydig cells at 1:10-1:20 dilution.