



Datasheet for ABIN5587841
anti-SH2D4B antibody



[Go to Product page](#)

1 Image

Overview

Quantity:	100 µL
Target:	SH2D4B
Reactivity:	Human
Host:	Rabbit
Clonality:	Polyclonal
Conjugate:	This SH2D4B antibody is un-conjugated
Application:	Immunohistochemistry (Paraffin-embedded Sections) (IHC (p))

Product Details

Purpose:	Rabbit polyclonal antibody raised against recombinant SH2D4B.
Immunogen:	Recombinant protein corresponding to amino acids of human SH2D4B.
Sequence:	ERKRGEEQIR LQEEQRAKEL YWTLKQAQLH CQASEKEERE WEEQLRRSKA ADEERSRRAQ RARDEYRHHS
Isotype:	IgG
Cross-Reactivity:	Human, Mouse

Target Details

Target:	SH2D4B
Alternative Name:	SH2D4B (SH2D4B Products)
Background:	Full Gene Name: SH2 domain containing 4B

Target Details

Synonyms: FLJ41984

Gene ID: 387694

Application Details

Application Notes: Immunohistochemistry (1:200-1:500)
The optimal working dilution should be determined by the end user.

Restrictions: For Research Use only

Handling

Format: Liquid

Buffer: In PBS, pH 7.2 (40 % glycerol, 0.02 % sodium azide)

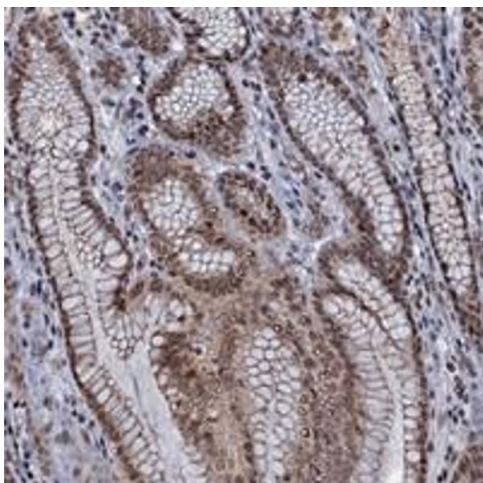
Preservative: Sodium azide

Precaution of Use: This product contains Sodium azide: a POISONOUS AND HAZARDOUS SUBSTANCE which should be handled by trained staff only.

Storage: 4 °C, -20 °C

Storage Comment: Store at 4°C. For long term storage store at -20°C.
Aliquot to avoid repeated freezing and thawing.

Images



Immunohistochemistry

Image 1. Immunohistochemical staining of human stomach with SH2D4B polyclonal antibody shows moderate nuclear and cytoplasmic and membranous positivity in glandular cells at 1:200-1:500 dilution.