



[Go to Product page](#)

Datasheet for ABIN5587901

anti-Shroom Family Member 4 (SHROOM4) antibody

1 Image

Overview

Quantity:	100 µL
Target:	Shroom Family Member 4 (SHROOM4)
Reactivity:	Human
Host:	Rabbit
Clonality:	Polyclonal
Conjugate:	Un-conjugated
Application:	Immunohistochemistry (Paraffin-embedded Sections) (IHC (p))

Product Details

Purpose:	Rabbit polyclonal antibody raised against recombinant SHROOM4.
Immunogen:	Recombinant protein corresponding to amino acids of human SHROOM4.
Sequence:	GSCALNP EEV LEQPQLSFG HLEGSRQGSQ SVP AEQESFA LHSSDFL PPI RGHLGSQPEQ AQPPCYYGIG GLWRTSGQEA TESAKQEFQH FSPPSGAPGI PTSYSAYYNI SVAKAELLNK LKDQPEMAEI G
Isotype:	IgG
Cross-Reactivity:	Human

Target Details

Target:	Shroom Family Member 4 (SHROOM4)
Alternative Name:	SHROOM4 (SHROOM4 Products)

Target Details

Background: Full Gene Name: shroom family member 4
Synonyms: KIAA1202

Gene ID: 57477

Application Details

Application Notes: Immunohistochemistry (1:50-1:200)
The optimal working dilution should be determined by the end user.

Restrictions: For Research Use only

Handling

Format: Liquid

Buffer: In PBS, pH 7.2 (40 % glycerol, 0.02 % sodium azide)

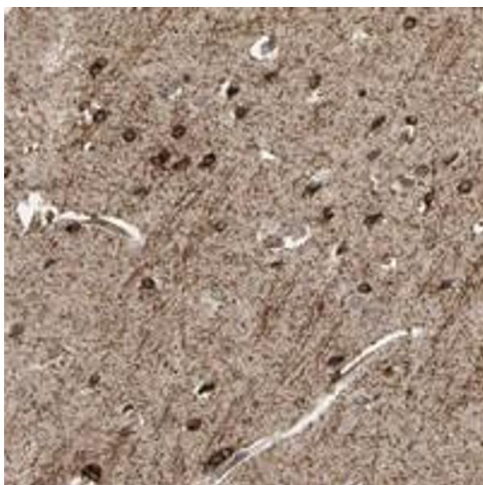
Preservative: Sodium azide

Precaution of Use: This product contains Sodium azide: a POISONOUS AND HAZARDOUS SUBSTANCE which should be handled by trained staff only.

Storage: 4 °C,-20 °C

Storage Comment: Store at 4°C. For long term storage store at -20°C.
Aliquot to avoid repeated freezing and thawing.

Images



Immunohistochemistry

Image 1. Immunohistochemical staining of human cerebral cortex with SHROOM4 polyclonal antibody shows strong cytoplasmic positivity in neuronal cells at 1:50-1:200 dilution.