

Datasheet for ABIN5587920

**anti-SIK2 antibody**

3 Images

[Go to Product page](#)

## Overview

Quantity:	50 µg
Target:	SIK2
Reactivity:	Human
Host:	Mouse
Clonality:	Monoclonal
Conjugate:	This SIK2 antibody is un-conjugated
Application:	Western Blotting (WB), Immunoprecipitation (IP), Immunofluorescence (IF), Immunocytochemistry (ICC), Immunohistochemistry (Paraffin-embedded Sections) (IHC (p))

## Product Details

Purpose:	Mouse monoclonal antibody raised against recombinant human SIK2.
Immunogen:	Recombinant protein corresponding to human SIK2.
Clone:	S15G10
Isotype:	IgG1
Cross-Reactivity:	Human

## Target Details

Target:	SIK2
Alternative Name:	SIK2 ( <a href="#">SIK2 Products</a> )
Background:	Full Gene Name: salt-inducible kinase 2

## Target Details

Synonyms: DKFZp434K1115,KIAA0781,LOH11CR11,QIK,SNF1LK2

Gene ID: 23235

## Application Details

Application Notes: Immunocytochemistry  
Immunofluorescence (1:100-1:400)  
Immunohistochemistry (Formalin/PFA-fixed paraffin-embedded sections) (10 µg/mL)  
Immunoprecipitation  
Western Blot (1:250)  
The optimal working dilution should be determined by the end user.

Restrictions: For Research Use only

## Handling

Format: Liquid

Buffer: In PBS, pH 7.2 (0.09 % sodium azide).

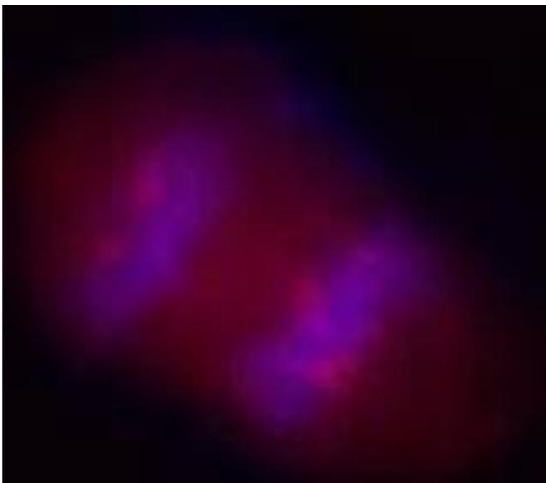
Preservative: Sodium azide

Precaution of Use: This product contains Sodium azide: a POISONOUS AND HAZARDOUS SUBSTANCE which should be handled by trained staff only.

Storage: 4 °C

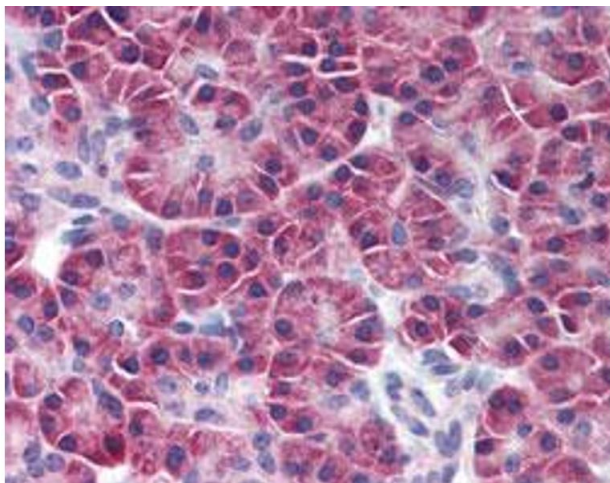
Storage Comment: Store at 4°C. Do not freeze.

## Images



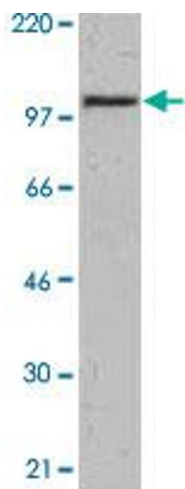
### Immunocytochemistry

**Image 1.** Immunocytochemistry staining of nocodazole treated Hela cells overnight with SIK2 monoclonal antibody, clone S15G10 followed by Cy3-conjugated goat anti-mouse IgG and DAPI.



#### Immunohistochemistry

**Image 2.** Immunohistochemical staining (Formalin-fixed paraffin-embedded sections) of human pancreas with SIK2 monoclonal antibody, clone S15G10 at 10 ug/mL working concentration.



#### Western Blotting

**Image 3.** Western Blot analysis of extracts from HeLa cell with SIK2 monoclonal antibody, clone S15G10 .