

Datasheet for ABIN5587970

**anti-SKP1 antibody**

5 Images

[Go to Product page](#)

## Overview

Quantity:	100 µL
Target:	SKP1
Reactivity:	Human
Host:	Mouse
Clonality:	Monoclonal
Conjugate:	This SKP1 antibody is un-conjugated
Application:	Western Blotting (WB), ELISA, Immunohistochemistry (Paraffin-embedded Sections) (IHC (p)), Flow Cytometry (FACS), Immunofluorescence (IF)

## Product Details

Purpose:	Mouse monoclonal antibody raised against recombinant SKP1.
Immunogen:	Recombinant protein corresponding to human SKP1.
Clone:	4E11
Isotype:	IgG1
Cross-Reactivity:	Human

## Target Details

Target:	SKP1
Alternative Name:	SKP1 ( <a href="#">SKP1 Products</a> )
Background:	Full Gene Name: S-phase kinase-associated protein 1

## Target Details

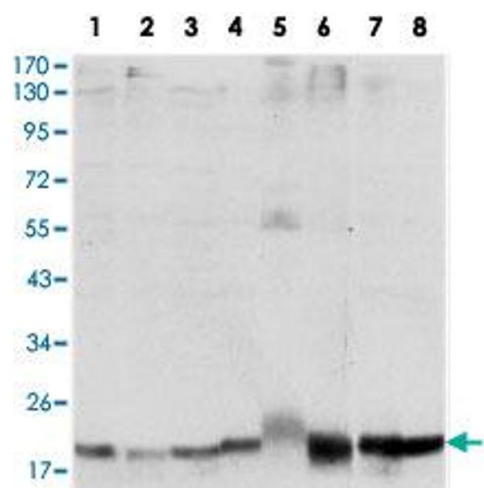
	Synonyms: EMC19,MGC34403,OCP-II,OCP2,SKP1A,TCEB1L,p19A
Gene ID:	6500
Pathways:	<a href="#">Cell Division Cycle</a> , <a href="#">Hedgehog Signaling</a> , <a href="#">Mitotic G1-G1/S Phases</a>

## Application Details

Application Notes:	ELISA (1:10000) Western Blot (1:500-1:2000) Immunohistochemistry (1:200-1:1000) Immunofluorescence (1:200-1:1000) Flow cytometry (1:200-1:400) The optimal working dilution should be determined by the end user.
Restrictions:	For Research Use only

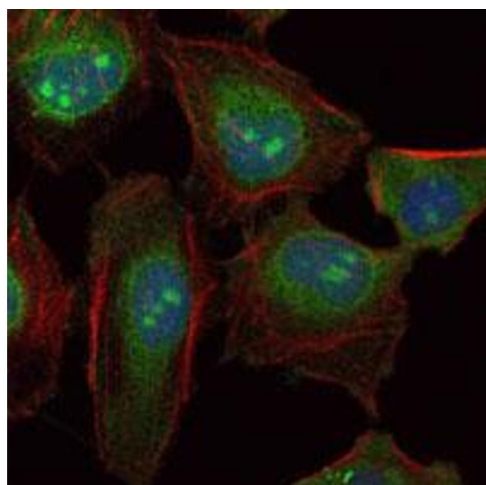
## Handling

Format:	Liquid
Buffer:	In ascites (0.03 % sodium azide)
Preservative:	Sodium azide
Precaution of Use:	This product contains Sodium azide: a POISONOUS AND HAZARDOUS SUBSTANCE which should be handled by trained staff only.
Storage:	4 °C,-20 °C
Storage Comment:	Store at 4°C. For long term storage store at -20°C. Aliquot to avoid repeated freezing and thawing.



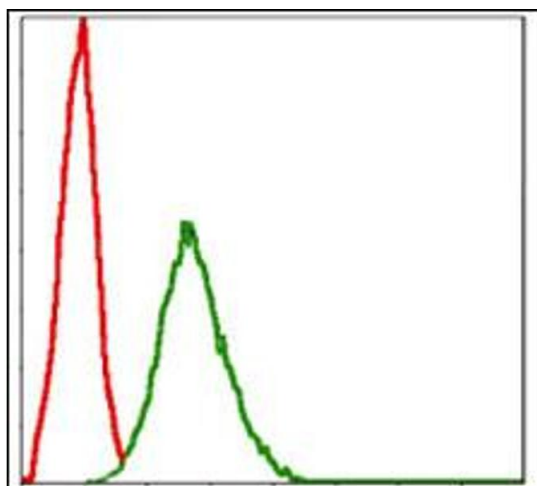
#### Western Blotting

**Image 1.** Western blot analysis using SKP1 monoclonal antibody, clone 4E11 against HeLa (1), NIH/3T3 (2), A-431 (3), RAJI (4), PC-12 (5), COS-7 (6), MCF-7 (7) and HepG2 (8) cell lysate.



#### Immunofluorescence

**Image 2.** Immunofluorescence analysis of HeLa cells using SKP1 monoclonal antibody, clone 4E11 (green). Blue: DRAQ5 fluorescent DNA dye. Red: Actin filaments have been labeled with Alexa Fluor-555 phalloidin.



#### Flow Cytometry

**Image 3.** Flow cytometric analysis of NIH/3T3 cells using SKP1 monoclonal antibody, clone 4E11 (green) and negative control (red).

Please check the [product details page](#) for more images. Overall 5 images are available for ABIN5587970.