

Datasheet for ABIN5587990  
**anti-SLC10A4 antibody (N-Term)**[Go to Product page](#)

## 1 Image

## Overview

Quantity:	100 µg
Target:	SLC10A4
Binding Specificity:	N-Term
Reactivity:	Mouse, Rat
Host:	Rabbit
Clonality:	Polyclonal
Conjugate:	This SLC10A4 antibody is un-conjugated
Application:	Western Blotting (WB), ELISA, Immunohistochemistry (IHC)

## Product Details

Purpose:	Rabbit polyclonal antibody raised against synthetic peptide of Slc10a4.
Immunogen:	A synthetic peptide corresponding to N-terminus of mouse and rat Slc10a4.
Isotype:	IgG
Specificity:	This antibody recognizes ~48 KDa of Slc10a4.
Cross-Reactivity:	Mouse, Rat

## Target Details

Target:	SLC10A4
Alternative Name:	Slc10a4 ( <a href="#">SLC10A4 Products</a> )
Background:	Full Gene Name: solute carrier family 10 (sodium/bile acid cotransporter family), member 4

Target Details

	Synonyms: E130304D01
Gene ID:	231290, 305309

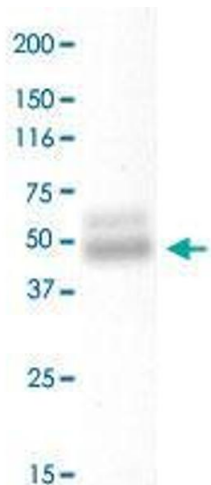
Application Details

Application Notes:	Western Blot (0.1-1 µg/mL) ELISA (0.01-0.1 µg/mL) Immunoprecipitation (2-5 µg/mL) Immunohistochemistry (1:200) The optimal working dilution should be determined by the end user.
Restrictions:	For Research Use only

Handling

Format:	Liquid
Buffer:	In PBS, pH 7.2 (BSA, 10 % Proclin300)
Preservative:	ProClin
Precaution of Use:	This product contains ProClin: a POISONOUS AND HAZARDOUS SUBSTANCE which should be handled by trained staff only.
Storage:	4 °C,-20 °C,-80 °C
Storage Comment:	Store at 4°C. For long term storage store at -20°C to -80°C. Aliquot to avoid repeated freezing and thawing.

Images



**Image 1.** Mouse brain tissue lysate was separated in 10% SDS-PAGE, transferred onto NC membrane, and followed by immune-staining with Slc10a4 polyclonal antibody at 1 : 500. A dominant immunoreactive protein band at ~48 kDa was observed.