

Datasheet for ABIN5587993

**anti-SLC10A7 antibody**[Go to Product page](#)**1** Image

## Overview

Quantity:	100 µL
Target:	SLC10A7
Reactivity:	Human
Host:	Rabbit
Clonality:	Polyclonal
Conjugate:	This SLC10A7 antibody is un-conjugated
Application:	Immunohistochemistry (Paraffin-embedded Sections) (IHC (p))

## Product Details

Purpose:	Rabbit polyclonal antibody raised against recombinant SLC10A7.
Immunogen:	Recombinant protein corresponding to amino acids of human SLC10A7.
Sequence:	LSITPINEWL LKGLQTVGCM PPPVSSAVIL TKAVGGNEAA AIFNSAFGSF LVSKHSLTCL LQL
Isotype:	IgG
Cross-Reactivity:	Human

## Target Details

Target:	SLC10A7
Alternative Name:	SLC10A7 ( <a href="#">SLC10A7 Products</a> )
Background:	Full Gene Name: solute carrier family 10 (sodium/bile acid cotransporter family), member 7 Synonyms: C4orf13,DKFZp313H0531,DKFZp566M114,DKFZp77902438,MGC25043,P7

## Target Details

Gene ID: 84068

## Application Details

Application Notes: Immunohistochemistry (1:50-1:200)  
The optimal working dilution should be determined by the end user.

Restrictions: For Research Use only

## Handling

Format: Liquid

Buffer: In PBS, pH 7.2 (40 % glycerol, 0.02 % sodium azide)

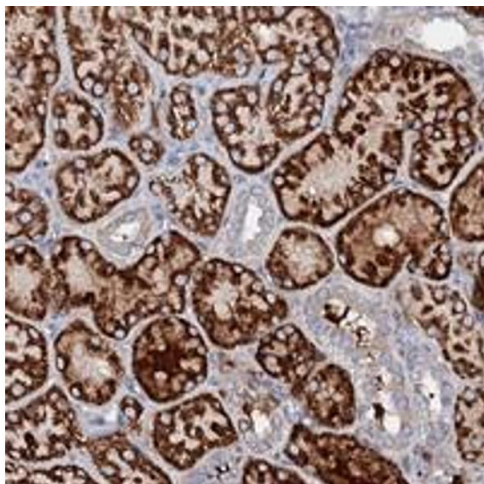
Preservative: Sodium azide

Precaution of Use: This product contains Sodium azide: a POISONOUS AND HAZARDOUS SUBSTANCE which should be handled by trained staff only.

Storage: 4 °C, -20 °C

Storage Comment: Store at 4°C. For long term storage store at -20°C.  
Aliquot to avoid repeated freezing and thawing.

## Images



### Immunohistochemistry

**Image 1.** Immunohistochemical staining of human kidney with SLC10A7 polyclonal antibody shows strong cytoplasmic positivity in cells in tubules at 1:50-1:200 dilution.