

Datasheet for ABIN5587994  
**anti-SLC11A2 antibody (Internal Region)**[Go to Product page](#)

## 2 Images

## Overview

Quantity:	50 µg
Target:	SLC11A2
Binding Specificity:	Internal Region
Reactivity:	Human, Monkey, Gibbon, Chimpanzee, Gorilla, Orang-Utan
Host:	Rabbit
Clonality:	Polyclonal
Conjugate:	This SLC11A2 antibody is un-conjugated
Application:	Immunohistochemistry (Paraffin-embedded Sections) (IHC (p))

## Product Details

Purpose:	Rabbit polyclonal antibody raised against synthetic peptide of SLC11A2.
Immunogen:	A synthetic peptide corresponding to 16 amino acids at internal region of human SLC11A2.
Specificity:	BLAST analysis of the peptide immunogen showed no homology with other human proteins.
Cross-Reactivity:	Chimpanzee, Gibbon, Gorilla, Human, Monkey, Orang-Utan
Cross-Reactivity (Details):	BLAST analysis of the peptide immunogen showed no homology with other human proteins.

## Target Details

Target:	SLC11A2
Alternative Name:	SLC11A2 ( <a href="#">SLC11A2 Products</a> )
Background:	Full Gene Name: solute carrier family 11 (proton-coupled divalent metal ion transporters),

## Target Details

	member 2
	Synonyms: DCT1,DMT1,FLJ37416,NRAMP2
Gene ID:	4891
Pathways:	<a href="#">Transition Metal Ion Homeostasis</a> , <a href="#">Proton Transport</a> , <a href="#">Positive Regulation of Endopeptidase Activity</a>

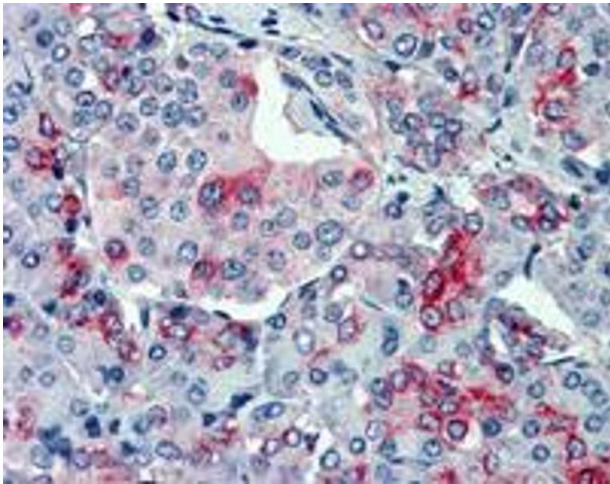
## Application Details

Application Notes:	Immunohistochemistry (Formalin/PFA-fixed paraffin-embedded sections) (15-20 µg/mL) The optimal working dilution should be determined by the end user.
Restrictions:	For Research Use only

## Handling

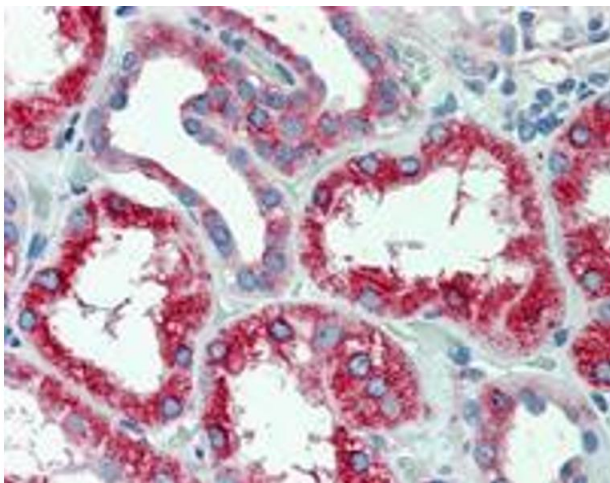
Format:	Liquid
Buffer:	In PBS (0.09 % sodium azide)
Preservative:	Sodium azide
Precaution of Use:	This product contains Sodium azide: a POISONOUS AND HAZARDOUS SUBSTANCE which should be handled by trained staff only.
Storage:	4 °C,-80 °C
Storage Comment:	Store at 4°C. For long term storage store at -80°C. Aliquot to avoid repeated freezing and thawing.

## Images



### Immunohistochemistry

**Image 1.** Immunohistochemistry (Formalin/PFA-fixed paraffin-embedded sections) of human pancreas with SLC11A2 polyclonal antibody . Immunohistochemistry of formalin-fixed, paraffin-embedded tissue after heat-induced antigen retrieval.



#### Immunohistochemistry

**Image 2.** Immunohistochemistry (Formalin/PFA-fixed paraffin-embedded sections) of human kidney with SLC11A2 polyclonal antibody . Immunohistochemistry of formalin-fixed, paraffin-embedded tissue after heat-induced antigen retrieval.