

Datasheet for ABIN5588117

anti-SLC1A5 antibody[Go to Product page](#)**2** Images

Overview

Quantity:	100 µL
Target:	SLC1A5
Reactivity:	Human
Host:	Rabbit
Clonality:	Polyclonal
Conjugate:	This SLC1A5 antibody is un-conjugated
Application:	Immunohistochemistry (Paraffin-embedded Sections) (IHC (p)), Immunofluorescence (IF)

Product Details

Purpose:	Rabbit polyclonal antibody raised against recombinant SLC1A5.
Immunogen:	Recombinant protein corresponding to amino acids of human SLC1A5.
Sequence:	MVADPPRDSK GLAAAEPTAN GGLALASIED QGAAAGGYCG SRDQVRRCLR AN
Isotype:	IgG
Cross-Reactivity:	Human

Target Details

Target:	SLC1A5
Alternative Name:	SLC1A5 (SLC1A5 Products)
Background:	Full Gene Name: solute carrier family 1 (neutral amino acid transporter), member 5 Synonyms: AAAT,ASCT2,ATBO,FLJ31068,M7V1,M7VS1,R16,RDRC

Target Details

Gene ID:	6510
Pathways:	Dicarboxylic Acid Transport , Warburg Effect

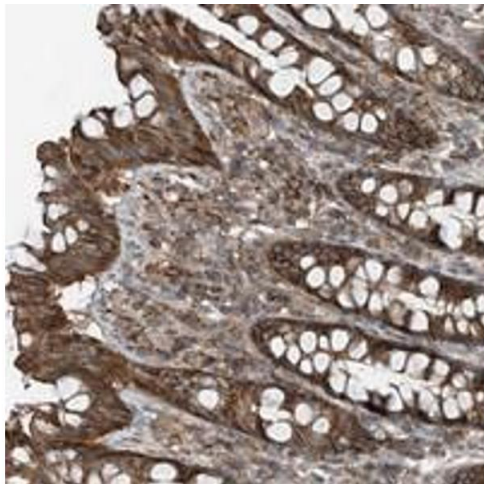
Application Details

Application Notes:	Immunohistochemistry (1:50-1:200) Immunofluorescence (1-4 µg/mL) The optimal working dilution should be determined by the end user.
Restrictions:	For Research Use only

Handling

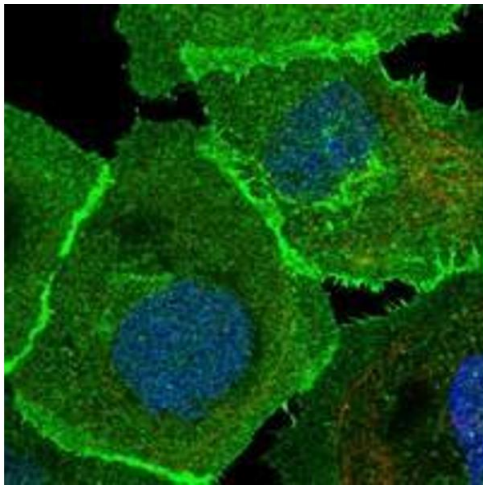
Format:	Liquid
Buffer:	In PBS, pH 7.2 (40 % glycerol, 0.02 % sodium azide)
Preservative:	Sodium azide
Precaution of Use:	This product contains Sodium azide: a POISONOUS AND HAZARDOUS SUBSTANCE which should be handled by trained staff only.
Storage:	4 °C,-20 °C
Storage Comment:	Store at 4°C. For long term storage store at -20°C. Aliquot to avoid repeated freezing and thawing.

Images



Immunohistochemistry

Image 1. Immunohistochemical staining of human rectum with SLC1A5 polyclonal antibody shows strong cytoplasmic and membranous positivity in glandular cells at 1:50-1:200 dilution.



Immunofluorescence

Image 2. Immunofluorescent staining of human cell line A-431 with SLC1A5 polyclonal antibody at 1-4 ug/mL dilution shows positivity in plasma membrane and golgi apparatus.