

Datasheet for ABIN5588122
anti-SLC22A16 antibody[Go to Product page](#)

1 Image

Overview

Quantity:	100 µL
Target:	SLC22A16
Reactivity:	Human
Host:	Rabbit
Clonality:	Polyclonal
Conjugate:	This SLC22A16 antibody is un-conjugated
Application:	Immunohistochemistry (Paraffin-embedded Sections) (IHC (p))

Product Details

Purpose:	Rabbit polyclonal antibody raised against recombinant SLC22A16.
Immunogen:	Recombinant protein corresponding to amino acids of human SLC22A16.
Sequence:	KLPETLGKRL ATTWEEAAKL ESENEKSSK LLLTTNNSGL EKTEAITPRD SGLGE
Isotype:	IgG
Cross-Reactivity:	Human

Target Details

Target:	SLC22A16
Alternative Name:	SLC22A16 (SLC22A16 Products)
Background:	Full Gene Name: solute carrier family 22 (organic cation/carnitine transporter), member 16 Synonyms: CT2,FLIPT2,OCT6,OKB1,dJ261K5.1

Target Details

Gene ID: 85413

Application Details

Application Notes: Immunohistochemistry (1:200-1:500)
The optimal working dilution should be determined by the end user.

Restrictions: For Research Use only

Handling

Format: Liquid

Buffer: In PBS, pH 7.2 (40 % glycerol, 0.02 % sodium azide)

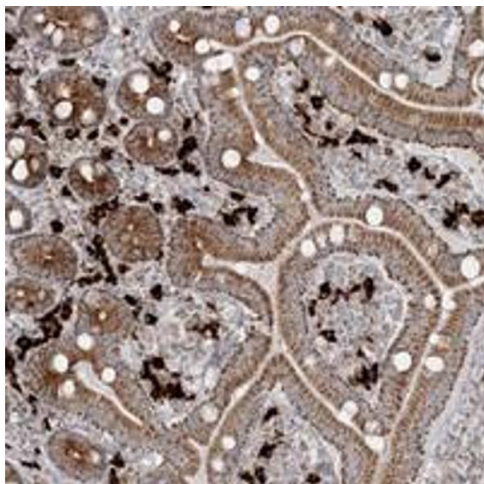
Preservative: Sodium azide

Precaution of Use: This product contains Sodium azide: a POISONOUS AND HAZARDOUS SUBSTANCE which should be handled by trained staff only.

Storage: 4 °C, -20 °C

Storage Comment: Store at 4°C. For long term storage store at -20°C.
Aliquot to avoid repeated freezing and thawing.

Images



Immunohistochemistry

Image 1. Immunohistochemical staining of human duodenum with SLC22A16 polyclonal antibody shows moderate cytoplasmic positivity in glandular cells at 1:200-1:500 dilution.