

Datasheet for ABIN5588134  
**anti-SLC25A29 antibody**[Go to Product page](#)

## 1 Image

## Overview

Quantity:	100 µL
Target:	SLC25A29
Reactivity:	Human
Host:	Rabbit
Clonality:	Polyclonal
Conjugate:	This SLC25A29 antibody is un-conjugated
Application:	Immunohistochemistry (Paraffin-embedded Sections) (IHC (p))

## Product Details

Purpose:	Rabbit polyclonal antibody raised against recombinant SLC25A29.
Immunogen:	Recombinant protein corresponding to amino acids of human SLC25A29.
Sequence:	HDSPLNQFLA GAAAGAIQCV ICCPMELAKT RLQLQDAGPA RTYKGS LDCL AQIYGHEGLR GVNRGMVSTL LRETPSFGVY FLTYDALTRA LGCEPGDRLL VPKLLLAGGT SGIVSWLSTY PVDVV
Isotype:	IgG
Cross-Reactivity:	Human

## Target Details

Target:	SLC25A29
Alternative Name:	SLC25A29 ( <a href="#">SLC25A29 Products</a> )
Background:	Full Gene Name: solute carrier family 25, member 29

## Target Details

Synonyms: C14orf69,CACL,FLJ38975

Gene ID: 123096

## Application Details

Application Notes: Immunohistochemistry (1:20-1:50)  
The optimal working dilution should be determined by the end user.

Restrictions: For Research Use only

## Handling

Format: Liquid

Buffer: In PBS, pH 7.2 (40 % glycerol, 0.02 % sodium azide)

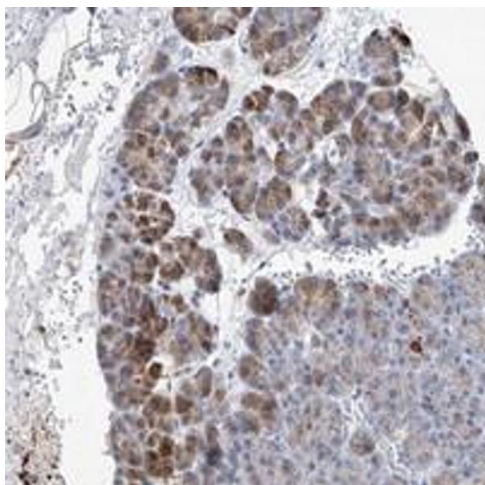
Preservative: Sodium azide

Precaution of Use: This product contains Sodium azide: a POISONOUS AND HAZARDOUS SUBSTANCE which should be handled by trained staff only.

Storage: 4 °C,-20 °C

Storage Comment: Store at 4°C. For long term storage store at -20°C.  
Aliquot to avoid repeated freezing and thawing.

## Images



### Immunohistochemistry

**Image 1.** Immunohistochemical staining of human pancreas with SLC25A29 polyclonal antibody shows moderate cytoplasmic positivity in exocrine glandular cells at 1:20-1:50 dilution.