

Datasheet for ABIN5588142  
**anti-SLC26A10 antibody**[Go to Product page](#)

## 1 Image

## Overview

Quantity:	100 µL
Target:	SLC26A10
Reactivity:	Human
Host:	Rabbit
Clonality:	Polyclonal
Conjugate:	This SLC26A10 antibody is un-conjugated
Application:	Immunohistochemistry (Paraffin-embedded Sections) (IHC (p))

## Product Details

Purpose:	Rabbit polyclonal antibody raised against recombinant SLC26A10.
Immunogen:	Recombinant protein corresponding to amino acids of human SLC26A10.
Sequence:	FGTRGQFRCN LEWHLGLGEG EKETSKPDGP MVAVAEPVRV VVLDMSGVTF ADAAGAREVV Q
Isotype:	IgG
Cross-Reactivity:	Human

## Target Details

Target:	SLC26A10
Alternative Name:	SLC26A10 ( <a href="#">SLC26A10 Products</a> )
Background:	Full Gene Name: solute carrier family 26, member 10
Gene ID:	65012

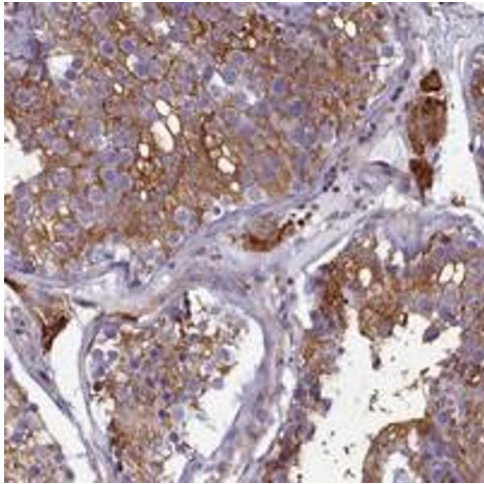
## Application Details

Application Notes:	Immunohistochemistry (1:200-1:500) The optimal working dilution should be determined by the end user.
Restrictions:	For Research Use only

## Handling

Format:	Liquid
Buffer:	In PBS, pH 7.2 (40 % glycerol, 0.02 % sodium azide)
Preservative:	Sodium azide
Precaution of Use:	This product contains Sodium azide: a POISONOUS AND HAZARDOUS SUBSTANCE which should be handled by trained staff only.
Storage:	4 °C,-20 °C
Storage Comment:	Store at 4°C. For long term storage store at -20°C. Aliquot to avoid repeated freezing and thawing.

## Images



### Immunohistochemistry

**Image 1.** Immunohistochemical staining of human testis with SLC26A10 polyclonal antibody shows strong cytoplasmic positivity in cells in seminiferous ducts and Leydig cells at 1:200-1:500 dilution.