

Datasheet for ABIN5588175  
**anti-SLC31A1 antibody (C-Term)**[Go to Product page](#)

## 2 Images

## Overview

Quantity:	100 µL
Target:	SLC31A1
Binding Specificity:	C-Term
Reactivity:	Human, Mouse, Rat, Zebrafish (Danio rerio), Pig, Xenopus laevis, Frog
Host:	Rabbit
Clonality:	Polyclonal
Conjugate:	This SLC31A1 antibody is un-conjugated
Application:	Western Blotting (WB), Immunohistochemistry (Paraffin-embedded Sections) (IHC (p)), Immunocytochemistry (ICC)

## Product Details

Purpose:	Rabbit polyclonal antibody raised against synthetic peptide of SLC31A1.
Immunogen:	A synthetic peptide corresponding to C-terminus of human SLC31A1.
Cross-Reactivity:	Frog, Human, Mouse, Pig, Rat, Xenopus laevis, Zebrafish (Danio rerio)

## Target Details

Target:	SLC31A1
Alternative Name:	SLC31A1 ( <a href="#">SLC31A1 Products</a> )
Background:	Full Gene Name: solute carrier family 31 (copper transporters), member 1 Synonyms: COPT1,CTR1,MGC75487,hCTR1

## Target Details

Gene ID: 1317

## Application Details

Application Notes: Immunohistochemistry (Formalin/PFA-fixed paraffin-embedded sections) (1:250)  
Western Blot (1:1000)  
The optimal working dilution should be determined by the end user.

Restrictions: For Research Use only

## Handling

Format: Liquid

Buffer: In Tris-citrate/phosphate buffer, pH 7-8 (0.09 % sodium azide)

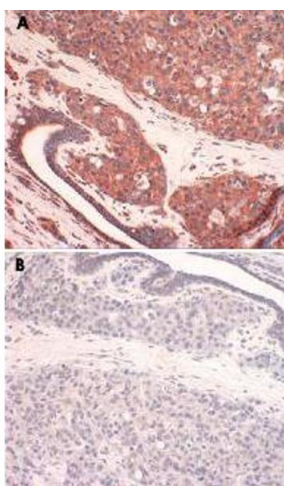
Preservative: Sodium azide

Precaution of Use: This product contains Sodium azide: a POISONOUS AND HAZARDOUS SUBSTANCE which should be handled by trained staff only.

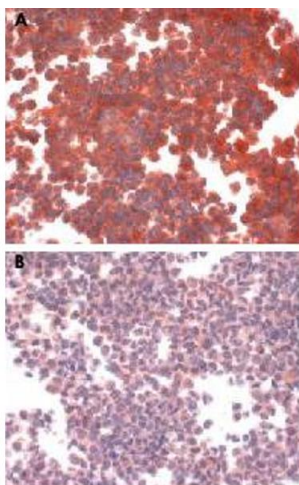
Storage: 4 °C

Storage Comment: Store at 4°C. Do not freeze.

## Images



**Image 1.** Panel A : Human SLC31A1 staining of human breast cancer tissue. Panel B : Human SLC31A1 antigen competition in human breast cancer tissue.



#### Immunohistochemistry

**Image 2.** Staining of SLC31A1 overexpressing cell line with SLC31A1 polyclonal antibody . Panel B is antibody plus peptide competition staining.