



[Go to Product page](#)

Datasheet for ABIN5588179
anti-SLC35A5 antibody

2 Images

Overview

Quantity:	100 µL
Target:	SLC35A5
Reactivity:	Human
Host:	Rabbit
Clonality:	Polyclonal
Conjugate:	This SLC35A5 antibody is un-conjugated
Application:	Western Blotting (WB), Immunohistochemistry (Paraffin-embedded Sections) (IHC (p))

Product Details

Purpose:	Rabbit polyclonal antibody raised against recombinant SLC35A5.
Immunogen:	Recombinant protein corresponding to amino acids of human SLC35A5.
Sequence:	TLQHNLARGR FHHDAFFSPS NSCLLFRSEC PRKDNCTAKE WTFPEAKWNT TARV
Isotype:	IgG
Cross-Reactivity:	Human

Target Details

Target:	SLC35A5
Alternative Name:	SLC35A5 (SLC35A5 Products)
Background:	Full Gene Name: solute carrier family 35, member A5 Synonyms: DKFZp434E102,FLJ111130,FLJ20730,FLJ25973

Target Details

Gene ID: 55032

Application Details

Application Notes: Immunohistochemistry (1:50-1:200)
Western Blot (1:250-1:500)
The optimal working dilution should be determined by the end user.

Restrictions: For Research Use only

Handling

Format: Liquid

Buffer: In PBS, pH 7.2 (40 % glycerol, 0.02 % sodium azide)

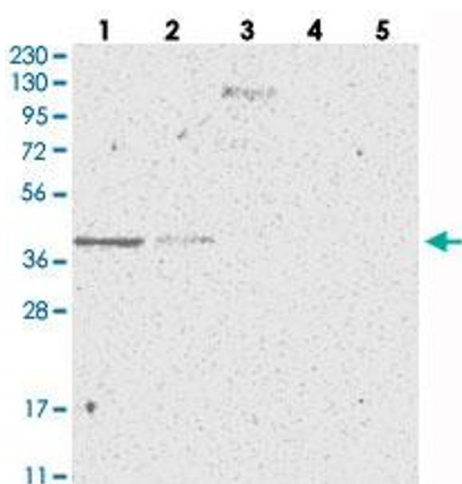
Preservative: Sodium azide

Precaution of Use: This product contains Sodium azide: a POISONOUS AND HAZARDOUS SUBSTANCE which should be handled by trained staff only.

Storage: 4 °C, -20 °C

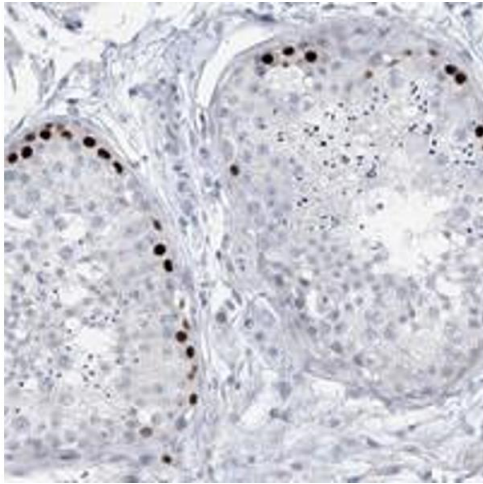
Storage Comment: Store at 4°C. For long term storage store at -20°C.
Aliquot to avoid repeated freezing and thawing.

Images



Western Blotting

Image 1. Western blot analysis of Lane 1: RT-4, Lane 2: U-251 MG, Lane 3: Human Plasma, Lane 4: Liver, Lane 5: Tonsil with SLC35A5 polyclonal antibody .



Immunohistochemistry

Image 2. Immunohistochemical staining of human testis with SLC35A5 polyclonal antibody shows strong nuclear positivity in a subset of spermatogonia.