

Datasheet for ABIN5588186

anti-SLC35F4 antibody[Go to Product page](#)**1** Image

Overview

Quantity:	100 µL
Target:	SLC35F4
Reactivity:	Human
Host:	Rabbit
Clonality:	Polyclonal
Conjugate:	This SLC35F4 antibody is un-conjugated
Application:	Immunohistochemistry (Paraffin-embedded Sections) (IHC (p))

Product Details

Purpose:	Rabbit polyclonal antibody raised against recombinant SLC35F4.
Immunogen:	Recombinant protein corresponding to amino acids of human SLC35F4.
Sequence:	EEWDEITLRF INSLKEKKSE EHVDDVTDPS IHLRGRGRAN GTVSIPLA
Isotype:	IgG
Cross-Reactivity:	Human, Mouse, Rat

Target Details

Target:	SLC35F4
Alternative Name:	SLC35F4 (SLC35F4 Products)
Background:	Full Gene Name: solute carrier family 35, member F4 Synonyms: C14orf36, FLJ37712, c14_5373

Target Details

Gene ID: 341880

Application Details

Application Notes: Immunohistochemistry (1:200-1:500)
The optimal working dilution should be determined by the end user.

Restrictions: For Research Use only

Handling

Format: Liquid

Buffer: In PBS, pH 7.2 (40 % glycerol, 0.02 % sodium azide)

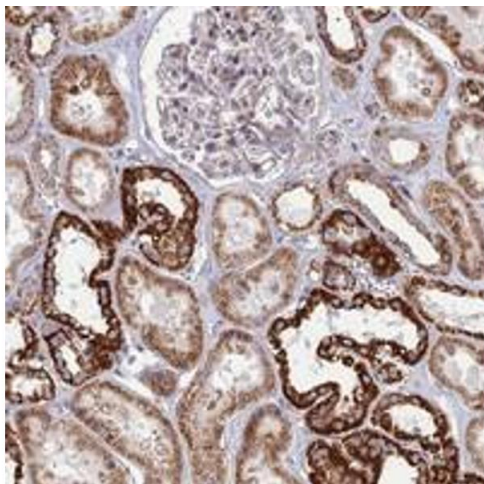
Preservative: Sodium azide

Precaution of Use: This product contains Sodium azide: a POISONOUS AND HAZARDOUS SUBSTANCE which should be handled by trained staff only.

Storage: 4 °C, -20 °C

Storage Comment: Store at 4°C. For long term storage store at -20°C.
Aliquot to avoid repeated freezing and thawing.

Images



Immunohistochemistry

Image 1. Immunohistochemical staining of human kidney with SLC35F4 polyclonal antibody shows strong cytoplasmic positivity in cells in tubules at 1:200-1:500 dilution.