



[Go to Product page](#)

Datasheet for ABIN5588196
anti-SLC38A11 antibody

1 Image

Overview

Quantity:	100 µL
Target:	SLC38A11
Reactivity:	Human
Host:	Rabbit
Clonality:	Polyclonal
Conjugate:	This SLC38A11 antibody is un-conjugated
Application:	Immunohistochemistry (Paraffin-embedded Sections) (IHC (p))

Product Details

Purpose:	Rabbit polyclonal antibody raised against recombinant SLC38A11.
Immunogen:	Recombinant protein corresponding to amino acids of human SLC38A11.
Sequence:	AISLGPHIPK TEDAWVFAKP NAIQ
Isotype:	IgG
Cross-Reactivity:	Human

Target Details

Target:	SLC38A11
Alternative Name:	SLC38A11 (SLC38A11 Products)
Background:	Full Gene Name: solute carrier family 38, member 11 Synonyms: AVT2,FLJ39822,MGC150450

Target Details

Gene ID: 151258

Application Details

Application Notes: Immunohistochemistry (1:20-1:50)
The optimal working dilution should be determined by the end user.

Restrictions: For Research Use only

Handling

Format: Liquid

Buffer: In PBS, pH 7.2 (40 % glycerol, 0.02 % sodium azide)

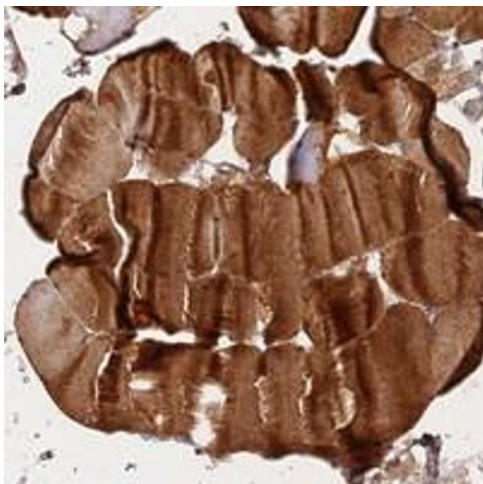
Preservative: Sodium azide

Precaution of Use: This product contains Sodium azide: a POISONOUS AND HAZARDOUS SUBSTANCE which should be handled by trained staff only.

Storage: 4 °C, -20 °C

Storage Comment: Store at 4°C. For long term storage store at -20°C.
Aliquot to avoid repeated freezing and thawing.

Images



Immunohistochemistry

Image 1. Immunohistochemical staining of human skeletal muscle with SLC38A11 polyclonal antibody shows strong cytoplasmic positivity at 1:20-1:50 dilution.