

Datasheet for ABIN5588200

**anti-Solute Carrier Family 38, Member 7 (SLC38A7) antibody**[Go to Product page](#)**2** Images

## Overview

Quantity:	100 µL
Target:	Solute Carrier Family 38, Member 7 (SLC38A7)
Reactivity:	Human
Host:	Rabbit
Clonality:	Polyclonal
Conjugate:	Un-conjugated
Application:	Immunohistochemistry (Paraffin-embedded Sections) (IHC (p)), Western Blotting (WB)

## Product Details

Purpose:	Rabbit polyclonal antibody raised against recombinant SLC38A7.
Immunogen:	Recombinant protein corresponding to amino acids of human SLC38A7.
Sequence:	MAQVSINNDY SEWDLSTDAG ERARLLQSPC VDTAPKSEWE ASPGGLDRGT TST
Isotype:	IgG
Cross-Reactivity:	Human

## Target Details

Target:	Solute Carrier Family 38, Member 7 (SLC38A7)
Alternative Name:	SLC38A7 ( <a href="#">SLC38A7 Products</a> )
Background:	Full Gene Name: solute carrier family 38, member 7 Synonyms: FLJ10815, FLJ12724

## Target Details

Gene ID: 55238

## Application Details

Application Notes: Immunohistochemistry (1:200-1:500)  
Western Blot (1:250-1:500)  
The optimal working dilution should be determined by the end user.

Restrictions: For Research Use only

## Handling

Format: Liquid

Buffer: In PBS, pH 7.2 (40 % glycerol, 0.02 % sodium azide)

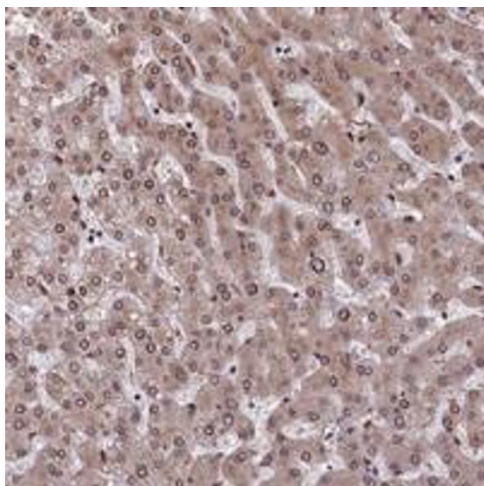
Preservative: Sodium azide

Precaution of Use: This product contains Sodium azide: a POISONOUS AND HAZARDOUS SUBSTANCE which should be handled by trained staff only.

Storage: 4 °C, -20 °C

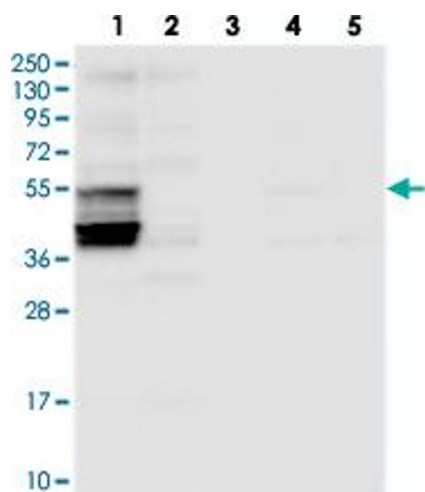
Storage Comment: Store at 4°C. For long term storage store at -20°C.  
Aliquot to avoid repeated freezing and thawing.

## Images



### Immunohistochemistry

**Image 1.** Immunohistochemical staining of human liver with SLC38A7 polyclonal antibody shows moderate cytoplasmic and nuclear membranous positivity in hepatocytes at 1:200-1:500 dilution.



Western Blotting

**Image 2.** Western blot analysis of Lane 1: RT-4, Lane 2: U-251 MG, Lane 3: Human Plasma, Lane 4: Liver, Lane 5: Tonsil with SLC38A7 polyclonal antibody at 1:250-1:500 dilution.