

Datasheet for ABIN5588209
anti-SLC39A14 antibody (Internal Region)[Go to Product page](#)

1 Image

Overview

Quantity:	50 µg
Target:	SLC39A14
Binding Specificity:	Internal Region
Reactivity:	Human, Pig, Dog, Horse, Gorilla, Chimpanzee
Host:	Rabbit
Clonality:	Polyclonal
Conjugate:	This SLC39A14 antibody is un-conjugated
Application:	Immunohistochemistry (Paraffin-embedded Sections) (IHC (p))

Product Details

Purpose:	Rabbit polyclonal antibody raised against synthetic peptide of SLC39A14.
Immunogen:	A synthetic peptide corresponding to 15 amino acids at internal region of human SLC39A14.
Specificity:	BLAST analysis of the peptide immunogen showed no homology with other human proteins.
Cross-Reactivity:	Chimpanzee, Dog, Gorilla, Horse, Human, Pig
Cross-Reactivity (Details):	BLAST analysis of the peptide immunogen showed no homology with other human proteins.

Target Details

Target:	SLC39A14
Alternative Name:	SLC39A14 (SLC39A14 Products)
Background:	Full Gene Name: solute carrier family 39 (zinc transporter), member 14

Target Details

	Synonyms: KIAA0062,LZT-Hs4,ZIP14,cig19
Gene ID:	23516
Pathways:	Transition Metal Ion Homeostasis

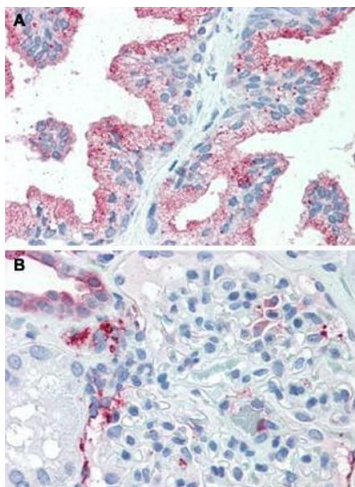
Application Details

Application Notes:	Immunohistochemistry (Formalin/PFA-fixed paraffin-embedded sections) (5-7.5 µg/mL) The optimal working dilution should be determined by the end user.
Restrictions:	For Research Use only

Handling

Format:	Liquid
Buffer:	In PBS (0.09 % sodium azide)
Preservative:	Sodium azide
Precaution of Use:	This product contains Sodium azide: a POISONOUS AND HAZARDOUS SUBSTANCE which should be handled by trained staff only.
Storage:	4 °C,-80 °C
Storage Comment:	Store at 4°C. For long term storage store at -80°C. Aliquot to avoid repeated freezing and thawing.

Images



Immunohistochemistry

Image 1. Immunohistochemical staining of human prostate (A) and human kidney (B) with SLC39A14 polyclonal antibody . Immunohistochemistry of formalin-fixed, paraffin-embedded tissue after heat-induced antigen retrieval.