

Datasheet for ABIN5588229
anti-SLC40A1 antibody (AA 250-300)[Go to Product page](#)

1 Image

Overview

Quantity:	100 µL
Target:	SLC40A1
Binding Specificity:	AA 250-300
Reactivity:	Human, Mouse
Host:	Rabbit
Clonality:	Polyclonal
Conjugate:	This SLC40A1 antibody is un-conjugated
Application:	Western Blotting (WB)

Product Details

Purpose:	Rabbit polyclonal antibody raised against synthetic peptide of SLC40A1.
Immunogen:	A synthetic peptide corresponding to amino acids 250-300 of human SLC40A1.
Specificity:	Western blot where a band is seen at ~62 KDa.
Cross-Reactivity:	Human, Mouse

Target Details

Target:	SLC40A1
Alternative Name:	SLC40A1 (SLC40A1 Products)
Background:	Full Gene Name: solute carrier family 40 (iron-regulated transporter), member 1 Synonyms: FPN1,HFE4,IREG1,MST079,MSTP079,MTP1,SLC11A3

Target Details

Gene ID:	30061
Pathways:	Transition Metal Ion Homeostasis

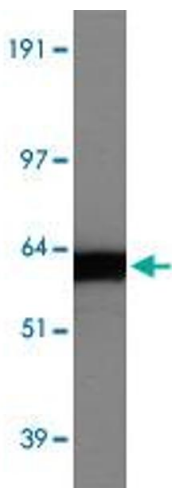
Application Details

Application Notes:	Western Blot (1 µg/mL) The optimal working dilution should be determined by the end user.
Restrictions:	For Research Use only

Handling

Format:	Liquid
Buffer:	In Tris-glycine, 150 mM NaCl, pH 7.5 (0.05 % sodium azide)
Preservative:	Sodium azide
Precaution of Use:	This product contains Sodium azide: a POISONOUS AND HAZARDOUS SUBSTANCE which should be handled by trained staff only.
Storage:	4 °C,-20 °C
Storage Comment:	Store at 4°C for short term. For long term storage store at -20°C. Aliquot to avoid repeated freezing and thawing.

Images



Western Blotting

Image 1. Western blot of human intestine lysate with SLC40A1 polyclonal antibody .