

Datasheet for ABIN5588233

anti-SLC43A1 antibody**2** Images[Go to Product page](#)

Overview

Quantity:	100 µL
Target:	SLC43A1
Reactivity:	Human
Host:	Rabbit
Clonality:	Polyclonal
Conjugate:	This SLC43A1 antibody is un-conjugated
Application:	Western Blotting (WB), Immunohistochemistry (Paraffin-embedded Sections) (IHC (p))

Product Details

Purpose:	Rabbit polyclonal antibody raised against recombinant SLC43A1.
Immunogen:	Recombinant protein corresponding to amino acids of human SLC43A1.
Sequence:	MDWRIKDCVD APTQGTVLGD ARDGVATKSI RPRYCKIQ
Isotype:	IgG
Cross-Reactivity:	Human

Target Details

Target:	SLC43A1
Alternative Name:	SLC43A1 (SLC43A1 Products)
Background:	Full Gene Name: solute carrier family 43, member 1 Synonyms: LAT3,PB39,POV1,R00504

Target Details

Gene ID: 8501

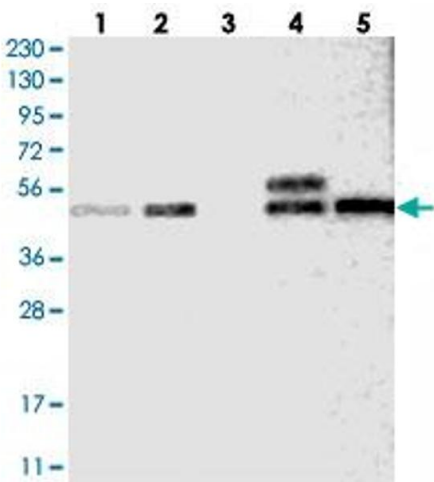
Application Details

Application Notes:	Immunohistochemistry (1:50-1:200) Western Blot (1:250-1:500) The optimal working dilution should be determined by the end user.
Restrictions:	For Research Use only

Handling

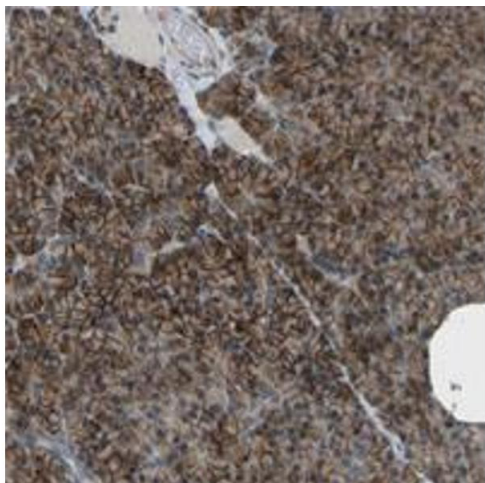
Format:	Liquid
Buffer:	In PBS, pH 7.2 (40 % glycerol, 0.02 % sodium azide)
Preservative:	Sodium azide
Precaution of Use:	This product contains Sodium azide: a POISONOUS AND HAZARDOUS SUBSTANCE which should be handled by trained staff only.
Storage:	4 °C,-20 °C
Storage Comment:	Store at 4°C. For long term storage store at -20°C. Aliquot to avoid repeated freezing and thawing.

Images



Western Blotting

Image 1. Western blot analysis of Lane 1: RT-4, Lane 2: U-251 MG, Lane 3: Human Plasma, Lane 4: Liver, Lane 5: Tonsil with SLC43A1 polyclonal antibody .



Immunohistochemistry

Image 2. Immunohistochemical staining of human cerebral cortex with SLC43A1 polyclonal antibody shows strong nuclear positivity in neuronal cells.