

Datasheet for ABIN5588237

anti-SLC44A2 antibody (Internal Region)[Go to Product page](#)**2** Images

Overview

Quantity:	50 µg
Target:	SLC44A2
Binding Specificity:	Internal Region
Reactivity:	Human, Chimpanzee, Gorilla
Host:	Rabbit
Clonality:	Polyclonal
Conjugate:	This SLC44A2 antibody is un-conjugated
Application:	Immunohistochemistry (Paraffin-embedded Sections) (IHC (p))

Product Details

Purpose:	Rabbit polyclonal antibody raised against synthetic peptide of SLC44A2.
Immunogen:	A synthetic peptide corresponding to 16 amino acids at internal region of human SLC44A2.
Specificity:	BLAST analysis of the peptide immunogen showed no homology with other human proteins.
Cross-Reactivity:	Chimpanzee, Gorilla, Human
Cross-Reactivity (Details):	BLAST analysis of the peptide immunogen showed no homology with other human proteins.

Target Details

Target:	SLC44A2
Alternative Name:	SLC44A2 (SLC44A2 Products)
Background:	Full Gene Name: solute carrier family 44, member 2

Target Details

	Synonyms: CTL2,DKFZp666A071,FLJ44586,PP1292
Gene ID:	57153
Pathways:	SARS-CoV-2 Protein Interactome

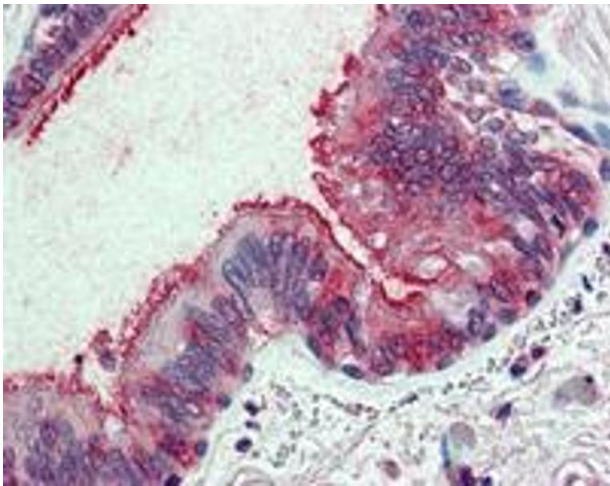
Application Details

Application Notes:	Immunohistochemistry (Formalin/PFA-fixed paraffin-embedded sections) (10 µg/mL) The optimal working dilution should be determined by the end user.
Restrictions:	For Research Use only

Handling

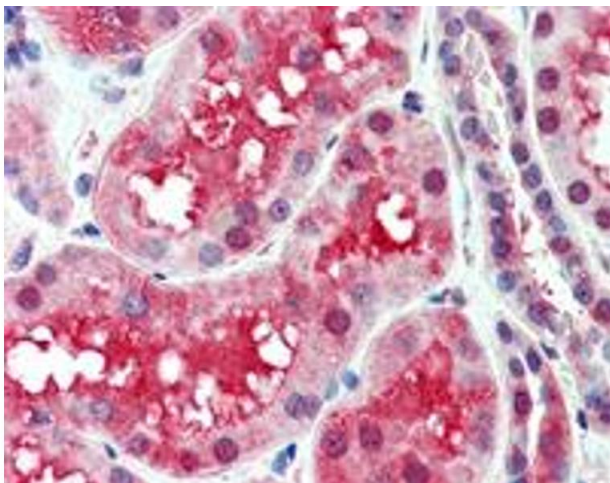
Format:	Liquid
Buffer:	In PBS (0.09 % sodium azide)
Preservative:	Sodium azide
Precaution of Use:	This product contains Sodium azide: a POISONOUS AND HAZARDOUS SUBSTANCE which should be handled by trained staff only.
Storage:	4 °C,-80 °C
Storage Comment:	Store at 4°C. For long term storage store at -80°C. Aliquot to avoid repeated freezing and thawing.

Images



Immunohistochemistry

Image 1. Immunohistochemistry (Formalin/PFA-fixed paraffin-embedded sections) of human lung respiratory epithelium with SLC44A2 polyclonal antibody . Immunohistochemistry of formalin-fixed, paraffin-embedded tissue after heat-induced antigen retrieval.



Immunohistochemistry

Image 2. Immunohistochemistry (Formalin/PFA-fixed paraffin-embedded sections) of human kidney with SLC44A2 polyclonal antibody . Immunohistochemistry of formalin-fixed, paraffin-embedded tissue after heat-induced antigen retrieval.