

Datasheet for ABIN5588259

**anti-Solute Carrier Family 5 (Sodium/inositol Cotransporter),
Member 11 (SLC5A11) (Internal Region) antibody**[Go to Product page](#)**2** Images

Overview

Quantity:	50 µg
Target:	Solute Carrier Family 5 (Sodium/inositol Cotransporter), Member 11 (SLC5A11)
Binding Specificity:	Internal Region
Reactivity:	Human, Monkey, Gorilla, Chimpanzee, Gibbon, Orang-Utan
Host:	Rabbit
Clonality:	Polyclonal
Conjugate:	Un-conjugated
Application:	Immunohistochemistry (Paraffin-embedded Sections) (IHC (p))

Product Details

Purpose:	Rabbit polyclonal antibody raised against synthetic peptide of SLC5A11.
Immunogen:	A synthetic peptide corresponding to 16 amino acids at internal region of human SLC5A11.
Specificity:	BLAST analysis of the peptide immunogen showed no homology with other human proteins.
Cross-Reactivity:	Chimpanzee, Gibbon, Gorilla, Human, Monkey, Orang-Utan
Cross-Reactivity (Details):	BLAST analysis of the peptide immunogen showed no homology with other human proteins.

Target Details

Target:	Solute Carrier Family 5 (Sodium/inositol Cotransporter), Member 11 (SLC5A11)
Alternative Name:	SLC5A11 (SLC5A11 Products)
Background:	Full Gene Name: solute carrier family 5 (sodium/glucose cotransporter), member 11

Target Details

Synonyms: KST1,RKST1,SGLT6,SMIT2

Gene ID: 115584

Application Details

Application Notes: Immunohistochemistry (Formalin/PFA-fixed paraffin-embedded sections) (10 µg/mL)
The optimal working dilution should be determined by the end user.

Restrictions: For Research Use only

Handling

Format: Liquid

Buffer: In PBS (0.09 % sodium azide)

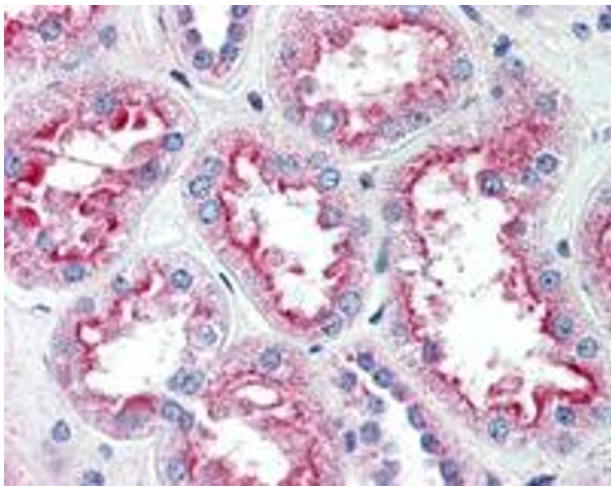
Preservative: Sodium azide

Precaution of Use: This product contains Sodium azide: a POISONOUS AND HAZARDOUS SUBSTANCE which should be handled by trained staff only.

Storage: 4 °C,-80 °C

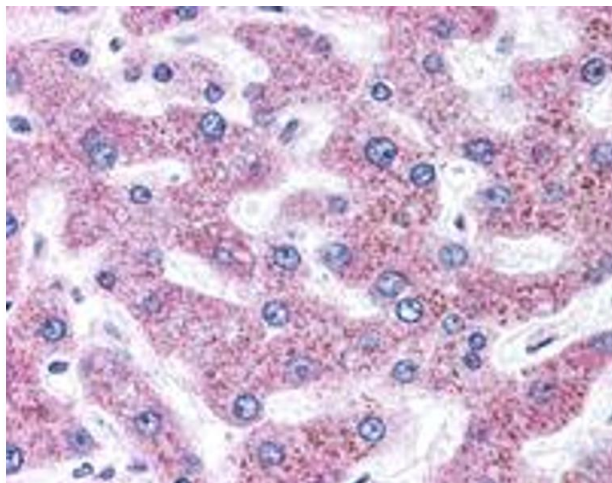
Storage Comment: Store at 4°C. For long term storage store at -80°C.
Aliquot to avoid repeated freezing and thawing.

Images



Immunohistochemistry

Image 1. Immunohistochemistry (Formalin/PFA-fixed paraffin-embedded sections) of human kidney with SLC5A11 polyclonal antibody . Immunohistochemistry of formalin-fixed, paraffin-embedded tissue after heat-induced antigen retrieval.



Immunohistochemistry

Image 2. Immunohistochemistry (Formalin/PFA-fixed paraffin-embedded sections) of human liver with SLC5A11 polyclonal antibody . Immunohistochemistry of formalin-fixed, paraffin-embedded tissue after heat-induced antigen retrieval.