

Datasheet for ABIN5588263

anti-SLC5A3 antibody[Go to Product page](#)**1** Image

Overview

Quantity:	50 µg
Target:	SLC5A3
Reactivity:	Human, Cow, Dog, Rabbit, Monkey, Hamster
Host:	Rabbit
Clonality:	Polyclonal
Conjugate:	This SLC5A3 antibody is un-conjugated
Application:	Immunohistochemistry (Paraffin-embedded Sections) (IHC (p))

Product Details

Purpose:	Rabbit polyclonal antibody raised against synthetic peptide of SLC5A3.
Immunogen:	A synthetic peptide (conjugated with KLH) corresponding to human SLC5A3.
Specificity:	C-terminal domain of human.
Cross-Reactivity:	Cow, Dog, Hamster, Human, Monkey, Rabbit

Target Details

Target:	SLC5A3
Alternative Name:	SLC5A3 (SLC5A3 Products)
Background:	Full Gene Name: solute carrier family 5 (sodium/myo-inositol cotransporter), member 3 Synonyms: SMIT,SMIT2
Gene ID:	6526

Target Details

Pathways: [Inositol Metabolic Process](#)

Application Details

Application Notes: Immunohistochemistry (Formalin/PFA-fixed paraffin-embedded sections) (40 µg/mL)
The optimal working dilution should be determined by the end user.

Restrictions: For Research Use only

Handling

Format: Liquid

Buffer: In PBS (0.09 % sodium azide)

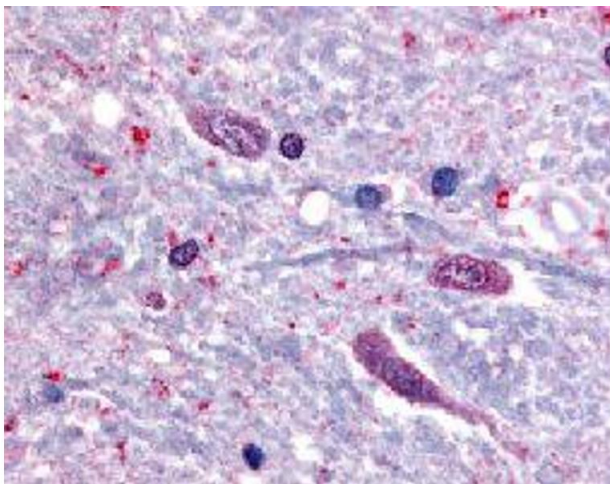
Preservative: Sodium azide

Precaution of Use: This product contains Sodium azide: a POISONOUS AND HAZARDOUS SUBSTANCE which should be handled by trained staff only.

Storage: 4 °C, -80 °C

Storage Comment: Store at 4°C. For long term storage store at -80°C.
Aliquot to avoid repeated freezing and thawing.

Images



Immunohistochemistry

Image 1. Immunohistochemical (Formalin/PFA-fixed paraffin-embedded sections) staining in human spinal cord with SLC5A3 polyclonal antibody .