

Datasheet for ABIN5588265

anti-SLC5A4 antibody[Go to Product page](#)**1** Image

Overview

Quantity:	50 µg
Target:	SLC5A4
Reactivity:	Human, Gorilla
Host:	Rabbit
Clonality:	Polyclonal
Conjugate:	This SLC5A4 antibody is un-conjugated
Application:	Immunohistochemistry (Paraffin-embedded Sections) (IHC (p))

Product Details

Purpose:	Rabbit polyclonal antibody raised against synthetic peptide of SLC5A4.
Immunogen:	A synthetic peptide (conjugated with KLH) corresponding to human SLC5A4.
Specificity:	C-terminal domain of human.
Cross-Reactivity:	Gorilla, Human

Target Details

Target:	SLC5A4
Alternative Name:	SLC5A4 (SLC5A4 Products)
Background:	Full Gene Name: solute carrier family 5 (low affinity glucose cotransporter), member 4 Synonyms: DJ90G24.4, SAAT1, SGLT3
Gene ID:	6527

Target Details

Pathways: [Proton Transport](#)

Application Details

Application Notes: Immunohistochemistry (Formalin/PFA-fixed paraffin-embedded sections) (20 µg/mL)
The optimal working dilution should be determined by the end user.

Restrictions: For Research Use only

Handling

Format: Liquid

Buffer: In PBS (0.09 % sodium azide)

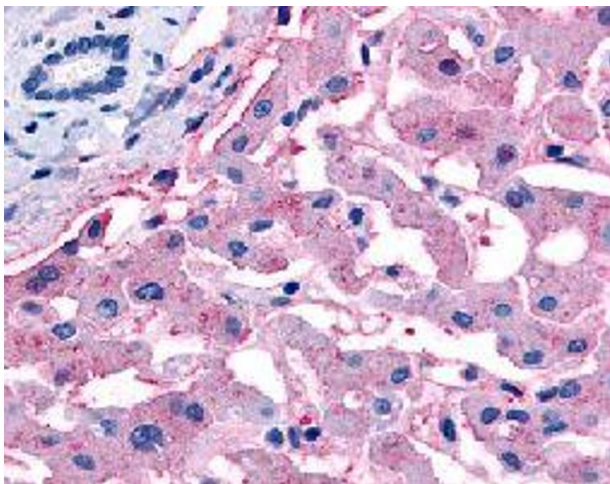
Preservative: Sodium azide

Precaution of Use: This product contains Sodium azide: a POISONOUS AND HAZARDOUS SUBSTANCE which should be handled by trained staff only.

Storage: 4 °C, -80 °C

Storage Comment: Store at 4°C. For long term storage store at -80°C.
Aliquot to avoid repeated freezing and thawing.

Images



Immunohistochemistry

Image 1. Immunohistochemical (Formalin/PFA-fixed paraffin-embedded sections) staining in human liver with SLC5A4 polyclonal antibody .