

Datasheet for ABIN5588285

anti-SLC5A6 antibody (Internal Region)[Go to Product page](#)**1** Image

Overview

Quantity:	50 µg
Target:	SLC5A6
Binding Specificity:	Internal Region
Reactivity:	Human, Cow, Dog, Horse, Rabbit, Gorilla
Host:	Rabbit
Clonality:	Polyclonal
Conjugate:	This SLC5A6 antibody is un-conjugated
Application:	Immunohistochemistry (Paraffin-embedded Sections) (IHC (p))

Product Details

Purpose:	Rabbit polyclonal antibody raised against synthetic peptide of SLC5A6.
Immunogen:	A synthetic peptide corresponding to 15 amino acids at internal region of human SLC5A6.
Specificity:	BLAST analysis of the peptide immunogen showed no homology with other human proteins.
Cross-Reactivity:	Cow, Dog, Gorilla, Horse, Human, Rabbit
Cross-Reactivity (Details):	BLAST analysis of the peptide immunogen showed no homology with other human proteins.

Target Details

Target:	SLC5A6
Alternative Name:	SLC5A6 (SLC5A6 Products)
Background:	Full Gene Name: solute carrier family 5 (sodium-dependent vitamin transporter), member 6

Target Details

	Synonyms: SMVT
Gene ID:	8884

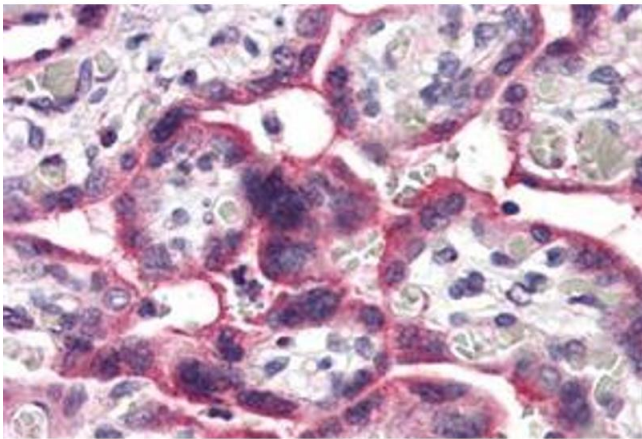
Application Details

Application Notes:	Immunohistochemistry (Formalin/PFA-fixed paraffin-embedded sections) (10 µg/mL) The optimal working dilution should be determined by the end user.
Restrictions:	For Research Use only

Handling

Format:	Liquid
Buffer:	In PBS (0.09 % sodium azide)
Preservative:	Sodium azide
Precaution of Use:	This product contains Sodium azide: a POISONOUS AND HAZARDOUS SUBSTANCE which should be handled by trained staff only.
Storage:	4 °C,-80 °C
Storage Comment:	Store at 4°C. For long term storage store at -80°C. Aliquot to avoid repeated freezing and thawing.

Images



Immunohistochemistry

Image 1. Immunohistochemical staining of human placenta with SLC5A6 polyclonal antibody . Immunohistochemistry of formalin-fixed, paraffin-embedded tissue after heat-induced antigen retrieval.