

Datasheet for ABIN5588286

**anti-SLC5A9 antibody (Internal Region)****2** Images[Go to Product page](#)

## Overview

Quantity:	50 µg
Target:	SLC5A9
Binding Specificity:	Internal Region
Reactivity:	Human, Monkey, Gorilla, Chimpanzee, Gibbon, Orang-Utan
Host:	Rabbit
Clonality:	Polyclonal
Conjugate:	This SLC5A9 antibody is un-conjugated
Application:	Immunohistochemistry (Paraffin-embedded Sections) (IHC (p))

## Product Details

Purpose:	Rabbit polyclonal antibody raised against synthetic peptide of SLC5A9.
Immunogen:	A synthetic peptide corresponding to 17 amino acids at internal region of human SLC5A9.
Specificity:	BLAST analysis of the peptide immunogen showed no homology with other human proteins.
Cross-Reactivity:	Chimpanzee, Gibbon, Gorilla, Human, Monkey, Orang-Utan
Cross-Reactivity (Details):	BLAST analysis of the peptide immunogen showed no homology with other human proteins.

## Target Details

Target:	SLC5A9
Alternative Name:	SLC5A9 ( <a href="#">SLC5A9 Products</a> )
Background:	Full Gene Name: solute carrier family 5 (sodium/glucose cotransporter), member 9

## Target Details

Synonyms: MGC132517,MGC132523,SGLT4

Gene ID: 200010

## Application Details

Application Notes: Immunohistochemistry (Formalin/PFA-fixed paraffin-embedded sections) (10 µg/mL)  
The optimal working dilution should be determined by the end user.

Restrictions: For Research Use only

## Handling

Format: Liquid

Buffer: In PBS (0.09 % sodium azide)

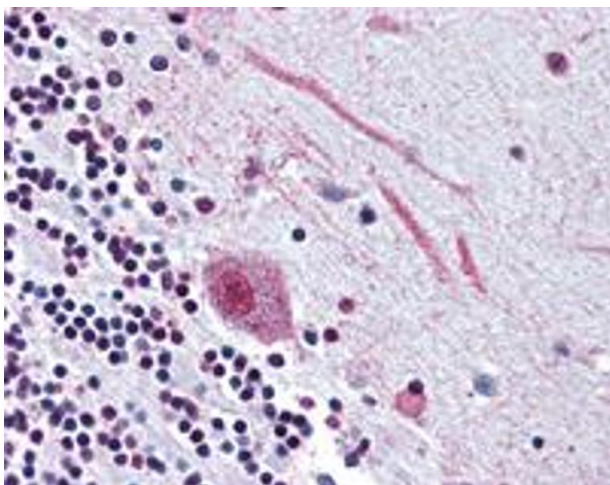
Preservative: Sodium azide

Precaution of Use: This product contains Sodium azide: a POISONOUS AND HAZARDOUS SUBSTANCE which should be handled by trained staff only.

Storage: 4 °C,-80 °C

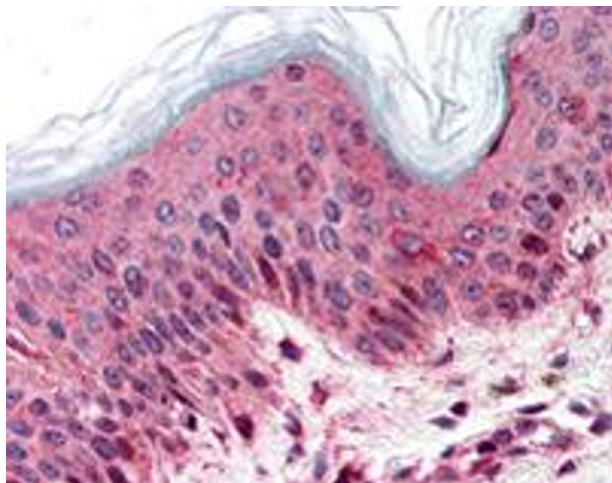
Storage Comment: Store at 4°C. For long term storage store at -80°C.  
Aliquot to avoid repeated freezing and thawing.

## Images



### Immunohistochemistry

**Image 1.** Immunohistochemistry (Formalin/PFA-fixed paraffin-embedded sections) of human brain with SLC5A9 polyclonal antibody . Immunohistochemistry of formalin-fixed, paraffin-embedded tissue after heat-induced antigen retrieval.



#### Immunohistochemistry

**Image 2.** Immunohistochemistry (Formalin/PFA-fixed paraffin-embedded sections) of human skin with SLC5A9 polyclonal antibody . Immunohistochemistry of formalin-fixed, paraffin-embedded tissue after heat-induced antigen retrieval.