

Datasheet for ABIN5588324  
**anti-SLC7A6OS antibody**[Go to Product page](#)

## 1 Image

## Overview

Quantity:	100 µL
Target:	SLC7A6OS
Reactivity:	Human
Host:	Rabbit
Clonality:	Polyclonal
Conjugate:	This SLC7A6OS antibody is un-conjugated
Application:	Immunohistochemistry (Paraffin-embedded Sections) (IHC (p))

## Product Details

Purpose:	Rabbit polyclonal antibody raised against recombinant SLC7A6OS.
Immunogen:	Recombinant protein corresponding to amino acids of human SLC7A6OS.
Sequence:	AEALVLACKR LRSDAVESAA QKTSEGLERA AENNVFHLVA TVCSQEEPQVQ PLLREVL RPS RDSQQRVRRN LRASAREVRQ EGRYRVLS
Isotype:	IgG
Cross-Reactivity:	Human

## Target Details

Target:	SLC7A6OS
Alternative Name:	SLC7A6OS ( <a href="#">SLC7A6OS Products</a> )
Background:	Full Gene Name: solute carrier family 7, member 6 opposite strand

## Target Details

Synonyms: FLJ13291

Gene ID: 84138

## Application Details

Application Notes: Immunohistochemistry (1:500-1:1000)  
The optimal working dilution should be determined by the end user.

Restrictions: For Research Use only

## Handling

Format: Liquid

Buffer: In PBS, pH 7.2 (40 % glycerol, 0.02 % sodium azide)

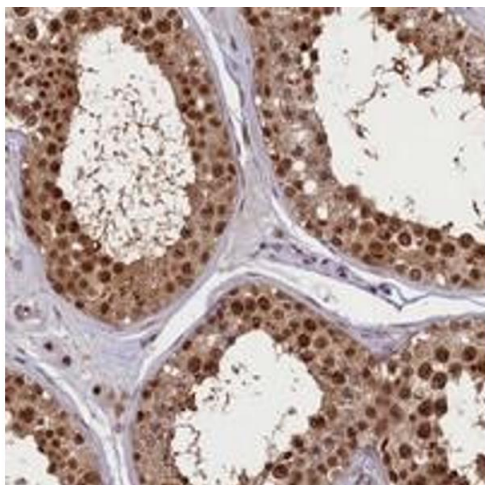
Preservative: Sodium azide

Precaution of Use: This product contains Sodium azide: a POISONOUS AND HAZARDOUS SUBSTANCE which should be handled by trained staff only.

Storage: 4 °C, -20 °C

Storage Comment: Store at 4°C. For long term storage store at -20°C.  
Aliquot to avoid repeated freezing and thawing.

## Images



### Immunohistochemistry

**Image 1.** Immunohistochemical staining of human testis with SLC7A6OS polyclonal antibody shows strong nuclear positivity in cells in seminiferous tubules.