

Datasheet for ABIN5588425

anti-SMCP antibody

4 Images

[Go to Product page](#)

Overview

Quantity:	100 µg
Target:	SMCP
Reactivity:	Human
Host:	Mouse
Clonality:	Monoclonal
Conjugate:	This SMCP antibody is un-conjugated
Application:	ELISA, Western Blotting (WB), Immunofluorescence (IF)

Product Details

Purpose:	Mouse monoclonal antibody raised against full length recombinant human SMCP.
Immunogen:	Recombinant protein corresponding to full length human SMCP.
Clone:	5C10D8
Isotype:	IgG2b
Cross-Reactivity:	Human

Target Details

Target:	SMCP
Alternative Name:	SMCP (SMCP Products)
Background:	Full Gene Name: sperm mitochondria-associated cysteine-rich protein Synonyms: HSMCSGEN1,MCS,MCSP,MGC26305,MGC26519

Target Details

Gene ID: 4184

Application Details

Application Notes: ELISA (1:10000)
Immunofluorescence (1:200-1:1000)
Western Blot (1:500-1:2000)
The optimal working dilution should be determined by the end user.

Restrictions: For Research Use only

Handling

Format: Liquid

Buffer: In PBS (0.05 % sodium azide)

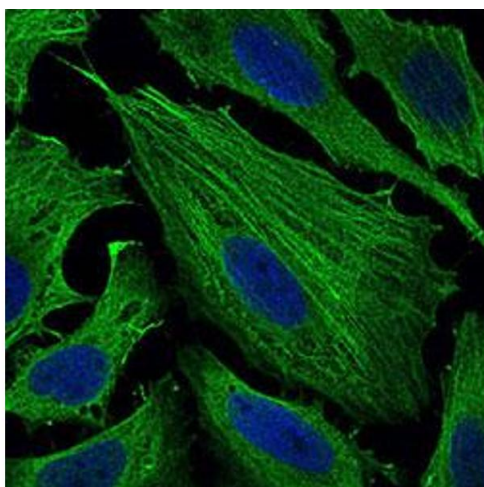
Preservative: Sodium azide

Precaution of Use: This product contains Sodium azide: a POISONOUS AND HAZARDOUS SUBSTANCE which should be handled by trained staff only.

Storage: 4 °C, -20 °C

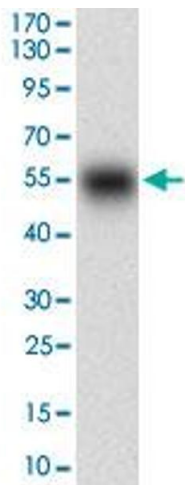
Storage Comment: Store at 4°C. For long term storage store at -20°C.
Aliquot to avoid repeated freezing and thawing.

Images



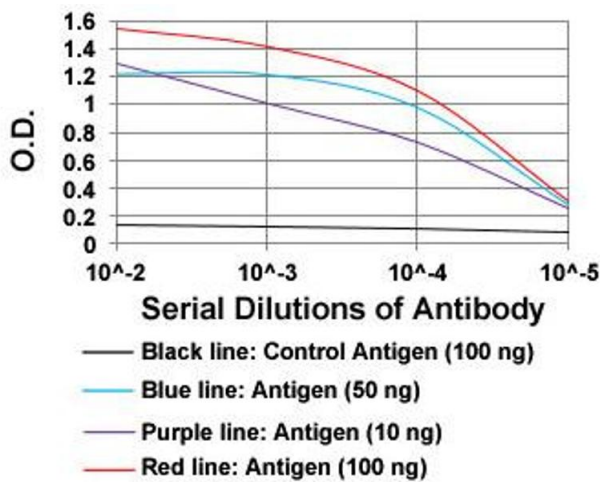
Immunofluorescence

Image 1. Immunofluorescent staining of HeLa cells with SMCP monoclonal antibody, clone 5C10D8 at 1:200-1:1000 dilution.



Western Blotting

Image 2. Western blot analysis of human SMCP (AA: 1-116) recombinant protein (Expected MW is 38.3 kDa) with SMCP monoclonal antibody, clone 5C10D8 at 1:500-1:2000 dilution.



ELISA

Image 3. ELISA analysis of SMCP monoclonal antibody, clone 5C10D8 at 1:10000 dilution.

Please check the [product details page](#) for more images. Overall 4 images are available for ABIN5588425.