

Datasheet for ABIN5588439

anti-SMO antibody[Go to Product page](#)**1** Image

Overview

Quantity:	50 µg
Target:	SMO
Reactivity:	Human, Mouse, Rat, Dog, Cow, Hamster, Horse, Monkey, Pig, Rabbit, Drosophila melanogaster, Gorilla
Host:	Rabbit
Clonality:	Polyclonal
Conjugate:	This SMO antibody is un-conjugated
Application:	Immunohistochemistry (Paraffin-embedded Sections) (IHC (p))

Product Details

Purpose:	Rabbit polyclonal antibody raised against synthetic peptide of SMO.
Immunogen:	A synthetic peptide corresponding to human SMO.
Specificity:	BLAST analysis of the peptide immunogen showed no homology with other human proteins.
Cross-Reactivity:	Cow, Dog, Drosophila melanogaster, Gorilla, Hamster, Horse, Human, Monkey, Mouse, Pig, Rabbit, Rat
Cross-Reactivity (Details):	BLAST analysis of the peptide immunogen showed no homology with other human proteins.

Target Details

Target:	SMO
Alternative Name:	SMO (SMO Products)

Target Details

Background: Full Gene Name: smoothened homolog (Drosophila)
Synonyms: Gx,SMOH

Gene ID: 6608

Pathways: [Hedgehog Signaling](#)

Application Details

Application Notes: Immunohistochemistry (Formalin/PFA-fixed paraffin-embedded sections) (10 µg/mL)
The optimal working dilution should be determined by the end user.

Restrictions: For Research Use only

Handling

Format: Liquid

Buffer: In PBS (0.09 % sodium azide)

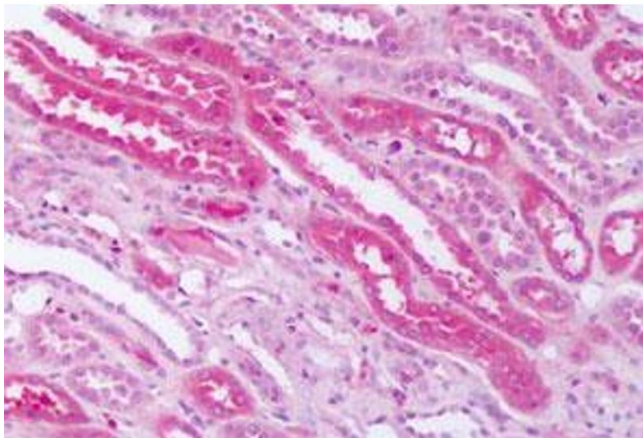
Preservative: Sodium azide

Precaution of Use: This product contains Sodium azide: a POISONOUS AND HAZARDOUS SUBSTANCE which should be handled by trained staff only.

Storage: 4 °C, -80 °C

Storage Comment: Store at 4°C. For long term storage store at -80°C.
Aliquot to avoid repeated freezing and thawing.

Images



Immunohistochemistry

Image 1. Immunohistochemical (Formalin/PFA-fixed paraffin-embedded sections) staining in human kidney with SMO polyclonal antibody . Immunohistochemistry of formalin-fixed, paraffin-embedded tissue after heat-induced antigen retrieval.